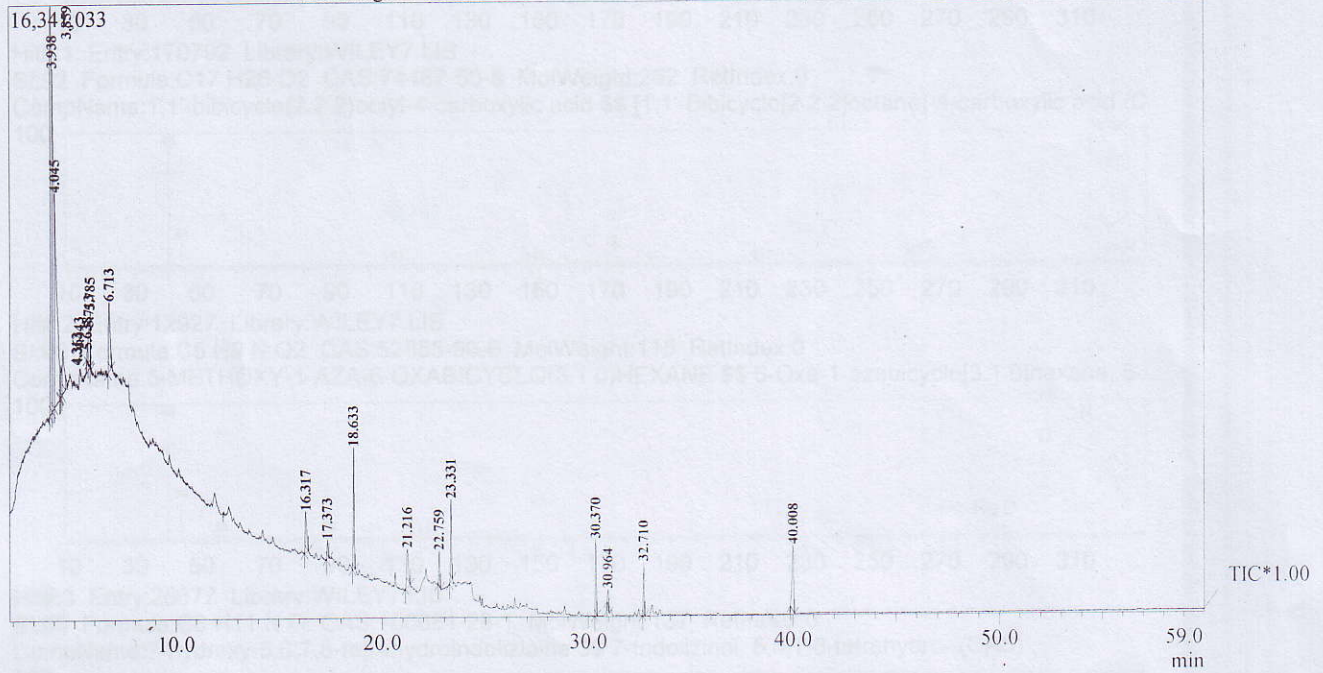


PUSLITBANG HASIL HUTAN REPORT

Analyzed by : Admin
 Analyzed : 9/6/2012 9:28:51 AM
 Sample Name : Gaharu aseton 2
 Sample ID : 06092012
 Data File : C:\GCMSsolution\Data\Project1\Gaharu aseton 2.qgd
 Method File : C:\GCMSsolution\Data\Project1\Gaharu aseton 2.qgm
 Tuning File : C:\GCMSsolution\System\Tune1\Tuning PT. Holcim\03052012.qgt

Chromatogram Gaharu aseton 2 C:\GCMSsolution\Data\Project1\Gaharu aseton 2.qgd



Peak Report TIC

Peak#	R.Time	Area	Conc%	Name
1	3.859	57748699	24.87	Methane, tetranitro- (CAS) Tetranitromethane
2	3.938	46993579	20.24	3,3-DIMETHYL-2-PHENYL-2-(1-OXO-1,2,3,4-TETRAHYDRONAPHTHALEN-
3	4.045	45069108	19.41	2-isopropylthio-5-trifluoracetyl-1,3-oxathiolium-4-olat
4	4.313	1190854	0.51	
5	4.363	3092894	1.33	1,2-Propadiene (CAS) Allene
6	4.443	7498711	3.23	2-Propanone (CAS) Acetone
7	5.638	1632302	0.70	2-Butanone, 3-hydroxy- (CAS) Acetoin
8	5.713	5108772	2.20	
9	5.785	2052226	0.88	Acetic acid (CAS) Ethylic acid
10	6.713	9649992	4.16	2-Propanone, 1-hydroxy- (CAS) Acetol
11	16.317	5642118	2.43	Phenol (CAS) Izal
12	17.373	1742249	0.75	2-Cyclopenten-1-one, 2-hydroxy-3-methyl- (CAS) Corylon
13	18.633	9814480	4.23	Phenol, 2-methoxy- (CAS) Guaiacol
14	21.216	5986334	2.58	ISOSORBID
15	22.759	2686563	1.16	Phenol, 4-ethenyl-2-methoxy-
16	23.331	6597848	2.84	Phenol, 2,6-dimethoxy- (CAS) 2,6-Dimethoxyphenol
17	30.370	5339014	2.30	Pentadecanoic acid, 14-methyl-, methyl ester (CAS) METHYL 14-METHYL-F
18	30.964	1334922	0.57	Octadecanoic acid (CAS) Stearic acid
19	32.710	3834758	1.65	Pentadecanoic acid, 14-methyl-, methyl ester (CAS) METHYL 14-METHYL-F
20	40.008	9198165	3.96	1,2-Benzenedicarboxylic acid, dioctyl ester (CAS) Dioctyl phthalate
		232213588	100.00	