

Single Nucleotide Polymorphism within the Promoter Region of Cynomolgus Monkey LDLR Gene

By Achmad Taher

2

Single Nucleotide Polymorphism within the Promoter Region of Cynomolgus Monkey *LDLR* Gene

Achmad Taher^{1*}, Dedy Duryadi Solihin², Sulistiyani³, Dewi Apri Astuti⁴, and Dondin Sajuthi⁵

51

1. Graduate School, Institut Pertanian Bogor, Dramaga, Bogor 16680, Indonesia
2. Departmen of Biology, Faculty of Mathematics and Natural Science, Institut Pertanian Bogor, Dramaga, Bogor 16680, Indonesia
3. Departmen of Biochemistry, Faculty of Mathematics and Natural Science, Institut Pertanian Bogor, Dramaga, Bogor 16680, Indonesia
4. Departmen of Animal Nutrition, Faculty of Animal Husbandry, Institut Pertanian Bogor, Dramaga, Bogor 16680, Indonesia
5. Primate Research Center, Institut Pertanian Bogor, Lodaya, Bogor 16151, Indonesia

*E-mail: a.taher@umipa.ac.id

Received January 19, 2017 | Accepted August 15, 2017

Abstract

45

The cynomolgus monkey (*Macaca fascicularis*) is one of the most common nonhuman primates used as an animal model in biomedical research related to atherosclerosis. However, little is known about genetic variation in the low density lipoprotein receptor (*LDLR*) gene, its effect on cholesterol levels, and associated risks of atherosclerosis. Therefore this study aimed to identify genetic polymorphisms, namely single nucleotide polymorphisms (SNPs), within the promoter region of *LDLR* and their relationship with animal responsiveness to hypercholesterolemia due to an atherogenic diet. In this research, SNPs were studied using DNA isolated from 22 cynomolgus monkeys obtained from a previous study, consisting of two hyporesponders, 19 hyperresponders, and one extreme case. The result showed that two SNPs existed in the promoter region, namely g.-169T>C and g.-265G>A. SNP g.-265G>A showed linkages with extreme responsiveness and can be used as a potential genetic marker for extreme animals. The result of this study has extended our knowledge of polymorphism in the *LDLR* gene and its use in the selection of cynomolgus monkeys as animal models in research on hypercholesterolemia and atherosclerosis.

58

Abstrak

Polimorfisme Nukleotida Tunggal (SNP) dalam Daerah Promotor Gen *LDLR* Monyet Ekor Panjang. Monyet ekor panjang (*Macaca fascicularis*) adalah salah satu satwa primata yang paling umum digunakan sebagai model hewan dalam penelitian biomedis yang terkait aterosklerosis. Meskipun demikian, masih sedikit informasi mengenai variasi genetik pada gen reseptor lipoprotein densitas rendah (*LDLR*) dan pengaruhnya terhadap kadar kolesterol dan resiko aterosklerosis. Penelitian ini bertujuan mengidentifikasi polimorfisme genetik berupa polimorfisme nukleotida tunggal (SNP) dalam daerah promotor gen *LDLR* dan keterkaitannya dengan sifat respons hewan terhadap hiperkolesterolemia akibat diet aterogenik. Pada penelitian ini SNP dikaji menggunakan DNA yang diisolasi dari 22 monyet ekor panjang, dari penelitian sebelumnya, terdiri atas dua individu yang bersifat hipo-respons, 19 hiper-respons dan satu ekstrem. Hasil penelitian menunjukkan adanya dua SNP pada daerah promotor, yaitu g.-169T>C dan g.-265G>A. SNP g.-265G>A menunjukkan keterkaitan dengan sifat respons yang ekstrem dan berpotensi digunakan sebagai penanda genetik terhadap hewan ekstrem. Hasil studi ini menambah pemahaman kita mengenai polimorfisme dalam gen *LDLR* dan penggunaannya dalam seleksi monyet ekor panjang sebagai model hewan dalam penelitian mengenai hiperkolesterolemia dan aterosklerosis.

Keywords: Cynomolgus monkey, *LDLR*, promoter, responsiveness, SNP

Introduction

Macaques are commonly used in scientific research as animal models of human behavior and disease. Although

less expensive and more abundant animal models, such as rodents and zebrafish, overshadow macaque use in research in part due to their easier husbandry, such animal models do not always provide the best

translational medicine [38], trying to elucidate human pathologies [1]. The long-tailed macaque (*Macaca fascicularis*), also known as the crab-eating or cynomolgus monkey, one of the monkeys (or macaques) most commonly used in biochemical research, particularly as an animal model for human atherosclerosis research, due to the general response of its plasma cholesterol to an atherogenic diet [2]. Even though most cynomolgus monkeys show a strong response to dietary cholesterol (*hyperresponder*), there are individuals in the population that show only a small response (*hyporesponder*) and still others that show a particularly strong response (*extreme*) [3]. A previous study on the development of an atherogenic diet to induce lipid plasma, conducted at the Primate Research Center of Bogor Agricultural University (PSSP IPB), reported that two of 22 cynomolgus monkeys fed an atherogenic diet for three months were hyporesponders and that one was extreme. It is hypothesized that variations in responsiveness to an atherogenic diet may be caused by genetic variability [4].

As with humans, cynomolgus monkeys have a diverse genetic background, as evidenced by a number of genetic polymorphisms reported previously [5,6], including several functional polymorphisms in genes involved in metabolic and inflammatory pathways [7,8] and in the immune system [9]. However, few studies have focused on polymorphisms in genes that are involved in cholesterol metabolism, particularly the *LDLR* gene, which codes for the low density lipoprotein receptor protein (LDL-R), and its implications for cholesterol levels and risk of atherosclerosis. Our previous study showed the existence of common genetic polymorphisms within the exon 6, intron 5, and 3'UTR regions of the cynomolgus monkey *LDLR* gene [10,11] but did not focus on the promoter region.

The *LDLR* gene encoding human LDL-R is 45 kb and is localized on chromosome 19 p13.1–13.3. The gene is composed of 18 exons and 17 introns, encoding an mRNA of 5.3 kb and a protein of 860 amino acids. The *LDLR* gene encodes a signal peptide (exon 1), a ligand binding domain (exons 2–6), an epidermal growth factor

homology domain (exons 7–14), an O-linked sugar domain (exon 15), a transmembrane domain (exons 16, 17), and a cytoplasmic domain (exons 17 and 18) [12]. LDL-R, a transmembrane cellular protein, plays a crucial role in the receptor-mediated pathway of lipoprotein metabolism. LDL-R modulates plasma levels of low density lipoprotein cholesterol (LDL-C) by regulating the liver's uptake of LDL particles and by delivering cholesterol to the adrenal glands and gonads for steroid hormone synthesis and to the liver for bile acid synthesis [13].

In this study, an attempt was made to identify polymorphisms within the promoter region of the cynomolgus monkey *LDLR* gene. The objective of this study was to identify single nucleotide polymorphisms (SNPs) within the promoter region of *LDLR* and their relationship with animal responsiveness to hypercholesterolemia due to an atherogenic diet. Results from this study on polymorphism are expected to improve efficiency in the use of cynomolgus monkeys as animal models in research on hypercholesterolemia and atherosclerosis.

Methods

Animals. The 22 cynomolgus monkeys (*Macaca fascicularis*) used in this study were adult males held at the animal facility of the Primate Research Center of Bogor Agricultural University, Indonesia. The monkeys ranged from six to eight years old, as estimated through their dentition. Their body weights averaged between four and five kg. All monkeys were subject to the standards set forth by the Institutional Animal Care and Use Committee (ACUC) with protocol number 12-B009-IR. Blood samples were obtained from each of the 22 monkeys, which, as previously described, were identified as hyporesponder, hyperresponder, or extreme after following a three-month, high cholesterol diet [4]. Animals that had plasma cholesterol concentrations within a range of 1.5 standard deviations from the mean (250 to 900 mg/dL) were classified as hyperresponders, whereas animals with cholesterol levels below or above this range (<250 mg/dL or > 900 mg/dL) were classified as hyporesponder or extreme, respectively (Table 1).

Table 1. Study Animals' Responsiveness to Atherogenic Diet

Animals (Tattoo No.)	Responsiveness	Animals (Tattoo No.)	Responsiveness
T3707	Hypo-	FE7777	Hyper-
K30	Hypo-	T3536	Hyper-
FC8501	Hyper-	C2480	Hyper-
T3049	Hyper-	T3303	Hyper-
FG7998	Hyper-	FG7909	Hyper-
T3307	Hyper-	T3300	Hyper-
T3700	Hyper-	C0750	Hyper-
T3278	Hyper-	FC9015	Hyper-
FC9113	Hyper-	C4927	Hyper-
9695	Hyper-	T3535	Hyper-
C4939	Hyper-	C0613	Extreme

Genomic DNA Extraction. Genomic DNA was extracted from 22 whole-blood samples using the QIAamp DNA Mini Kit (QIAGEN, Hilden, Germany), following the manufacturer's instructions.

PCR and Sequencing. The promoter regions within the cynomolgus monkey *LDLR* genes were amplified based on primers from a previous study [14]. The primers were F: 5'-GGATCCCGACCTGCTGTGTCCTAGC TGGAAA-3' and R: 5'-GGATCCAATCAAC GCCT GCCCTG GCGACA-3'. PCR reactions were conducted in a 25 μ L volume and contained 5 μ L of genomic DNA, 1 μ L of each primer (10 pmol), 12.5 μ L of KAPA HiFi HotStart ReadyMix PCR Kit (KAPA Biosystems, Boston, USA) and 3.5 μ L of nuclease-free water. Amplification was performed using a GeneAmp[®] PCR System 9700 thermal cycler (Applied Biosystems, Foster City, USA), and the cycling parameters were as follows: denaturation at 94 °C for 5 min, followed by 40 cycles. Each cycle consisted of denaturation at 94 °C for 30 s, annealing at 56 °C for 30 s, and extension at 72 °C for 7 min. The final extension was at 72 °C for 4 min. Amplicons were visualized on a transilluminator following 1.8% agarose gel electrophoresis containing ethidium bromide 10 μ g/mL to check band specificity sufficiency for subsequent sequence analysis. DNA fragments were then purified using the MinElute PCR Purification Kit (QIAGEN, Hilden, Germany) in accordance with the manufacturer's instructions, and sequencing was performed at First BASE Laboratories Sdn Bhd (Malaysia).

Sequence and Data Analysis. Consensus sequences were obtained by combining forward and reverse strands for each amplicon and aligning them to reference sequences of *Macaca fascicularis* (GenBank accession number XM_005587996.2) using MEGA-6. Geneious 7.0.2 (<http://geneious.en.softonic.com>, 30-day trial version) was used to edit and assess the quality of sequence data and to generate a final consensus sequence for each amplicon. Multiple sequence alignments were obtained using CLUSTAL W 1.8 in MEGA-6, and haplotype analysis was conducted in

DnaSP. The program TFSEARCH (<http://www.cbrc.jp/research/db/TFSEARCH.html>) was used to identify transcription factor binding sites within the vicinity of SNPs. The accession numbers of our nucleotide data in GenBank are: KY962394 (T3707), KY962395 (K30), KY962396 (FC8501), KY962397 (T3049), KY962398 (FG7998), KY962399 (T3307), KY962400 (T3700), KY962401 (T3278), KY962402 (FC9113), KY962403 (9695), KY962404 (C4939), KY962405 (FE7777), KY962406 (T3536), KY962407 (C2480), KY962408 (T3303), KY962409 (FG7909), KY962410 (T3300), KY962411 (C0750), KY962412 (FC9015), KY962413 (C4927), KY962414 (T3535), and KY962415 (C0613).

Results and Discussion

Amplification and Sequencing. Amplification using forward and reverse primers for the promoter region resulted in product sizing of 263 bp (Figure 1). Aligning the consensus sequences to reference showed that the amplicon contained part of the promoter region of the cynomolgus monkey *LDLR* gene from position -296 to -31 relative to the major transcriptional initiation site (nucleotide +1 is the A of the ATG-translation codon, nucleotide 5' of the ATG-translation codon is -1). This region contains three 16-bp repetitions which have been shown to be important for basal level expression and sterol regulation of human *LDLR* and transcription initiation sites [15].

SNP and Haplotype. Nucleotide sequence analysis of the amplicons of 22 cynomolgus monkeys identified two SNPs, namely g.-169T>C and g.-265G>A. The results of the alignment analysis showed that only two out of the 22 animals have nucleotide base sequences possessing polymorphism, i.e. C2480 (GenBank accession number KY962407) and C0613 (GenBank accession number KY962415). Animal C2480 has one SNP, i.e. g.-169T>C, whereas animal C0613 has one SNP, i.e. g.-265G>A (Figure 2). Analysis using the TFSEARCH program revealed that there was no binding site of transcription factors in the vicinity of the polymorphic sites. This result indicated that the identified polymorphisms

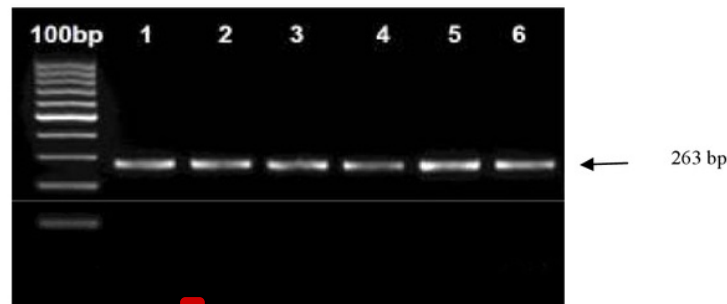


Figure 1. Agarose Gel Electrophoresis Image of PCR Products of Samples. Lane 100 bp is Marker Ladder; Lanes 1-6 are Samples; 263 bp is Product Sizing

```

20 animals      -34 >GGATCCCGACCTGTCGTGTCC TAGCTGGAAACTTGGCTTCCCGCGATTGCACTCGGGGGCCACG > -99
C2480          -34 >GGATCCCGACCTGTCGTGTCC TAGCTGGAAACTTGGCTTCCCGCGATTGCACTCGGGGGCCACG > -99
C0613          -34 >GGATCCCGACCTGTCGTGTCC TAGCTGGAAACTTGGCTTCCCGCGATTGCACTCGGGGGCCACG > -99

20 animals      -100 >TCATTTACAGCATTCAACGTGAGGTTTCTAGCAGGGGGAGGAGTTTGCAGTGGGGTGATTTTCAA > -165
C2480          -100 >TCATTTACAGCATTCAACGTGAGGTTTCTAGCAGGGGGAGGAGTTTGCAGTGGGGTGATTTTCAA > -165
C0613          -100 >TCATTTACAGCATTCAACGTGAGGTTTCTAGCAGGGGGAGGAGTTTGCAGTGGGGTGATTTTCAA > -165

20 animals      -166 >ATGTCCTCACCTCACAGTGAGAGGAGGAGTTTTCGAACGGCTGATGTGACATCGGCTTTTAAACCCG > -231
C2480          -166 >ATGTCCTCACCTCACAGTGAGAGGAGGAGTTTTCGAACGGCTGATGTGACATCGGCTTTTAAACCCG > -231
C0613          -166 >ATGTCCTCACCTCACAGTGAGAGGAGGAGTTTTCGAACGGCTGATGTGACATCGGCTTTTAAACCCG > -231

20 animals      -232 >TGAAGCTCTGATTCCCACTCCAGTCTTTTGAAAAGTGTGCCAGGGCAGGCAGCTTGATTGGATCC > -296
C2480          -232 >TGAAGCTCTGATTCCCACTCCAGTCTTTTGAAAAGTGTGCCAGGGCAGGCAGCTTGATTGGATCC > -296
C0613          -232 >TGAAGCTCTGATTCCCACTCCAGTCTTTTGAAAAGTGTGCCAGGGCAGGCAGCTTGATTGGATCC > -296

```

Figure 2. Alignment of the Promoter Sequence from 22 Cynomolgus Monkeys. The Single Nucleotide Polymorphisms (SNPs) in Animals C2480 and C0613 are Indicated by the Gray Shadow

Table 2. Identified SNPs within the Promoter Region, Aligned to Reference and Kind of Haplotype

Haplotypes	Nucleotides base position		No. of In- dividuals	Tattoo No.
	-169	-265		
Ref	T	G	-	-
I	T	G	20	FE7777, T3700, T3536, FC9015, T3303, T3278, FC8501, T3535, T3307, C4927, 9596, T3049, FG7909, FG7998, C0750, T3300, C4939, FC9113, T3707, K30
II	C	G	1	C2480
III	T	A	1	C0613

were non functional; a functional polymorphism is defined as a site that causes binding site appearance or disappearance of new transcription factors [16].

The two polymorphic sites produced three haplotypes, i.e. haplotype I (TG), II (CG), and III (TA). Haplotype I is similar to that belonging to the reference cynomolgus monkey in the GenBank; almost all (20 of 22) animal samples contained this haplotype (Table 2). Haplotype grouping becomes particularly interesting when the results are compared to the cynomolgus monkeys' responsiveness to an atherogenic diet, shown in Table 1. Namely, haplotype III (TA) belongs to cynomolgus monkey C0613, which is also the only study animal that demonstrates an extreme response to the atherogenic diet. The similarity of the SNP and responsiveness groupings shows a relationship between polymorphism and responsiveness to an atherogenic diet in cynomolgus monkeys.

This research demonstrated the existence of common genetic polymorphisms within the promoter regions of the cynomolgus monkey *LDLR* gene. Linking haplotype III to extreme responsiveness in the cynomolgus monkey gives the identified polymorphic sites the potential to be used as genetic markers, although the results still need to be confirmed using a larger sample of extreme responders. The existence of non functional SNPs within the promoter region suggests the possibility that these SNPs are exhibiting linkage disequilibrium

in relation to other functional SNPs, influencing the responsiveness to an atherogenic diet.

The function of polymorphisms identified in the *LDLR* gene of cynomolgus monkeys as a genetic marker for responsiveness has been studied before. Our previous study [10] reported the existence of a specific haplotype GCGC within the 3'UTR of the cynomolgus monkey *LDLR* gene that belonged only to an animal with extreme responsiveness. Moreover, within the regions of exon 6 and intron 5, the study found a specific haplotype associated with hyporesponders [11]. Thus, the present study supports the important principle that a common genetic variant can be used as a potential genetic marker of responsiveness. Previous reports identifying SNPs or haplotypes of the cynomolgus monkey have been mainly related to origin or geographical distribution [17,18]. Investigations of individual genetic variations that affect susceptibility to diseases or other disorders are still few when compared to the total number of biomedical research studies conducted on cynomolgus monkeys. Some such studies have included genetic variations related to malaria susceptibility [16], drug safety [19], and neurobiological reactivity due to stress [20].

32

Identification of genetic variations within the promoter region of the *LDLR* gene as genetic markers of responsiveness to an atherogenic diet is an important breakthrough, as it makes the preliminary selection of

animals simpler and more efficient. To date, in primate centers the selection of animals for research on responsiveness to diet requires an atherogenic diet intervention for two months [21,22]. This selection process is inefficient, because it requires strict control of the diet. Using the presence of genetic markers as a basis for the selection of extreme animals eliminates the need for treatment and control of the diet. In terms of time, the analysis of genetic variation is faster, while in terms of budget, genetic variation analysis is cheaper than animal feeding and care for the two month selection period in primate centers.

Selection of test animals prior to conducting research related to atherosclerosis is crucial, as it can improve the accuracy and efficiency of the scientific studies that will eventually support research success. Initial selection also reduces the number of test animals, thereby supporting the principles of the 3Rs (reduction, refinement, and replacement). Furthermore, the selection of animals based on genetic variation may reduce current limitations of using primates as models in genetic studies of complex diseases. Using animals that are genetically uniform will give greater power to the statistical analysis of tested variables, especially when using small samples [23]. The work presented here addresses the genetic variation in a functional gene and its influence on experimental outcomes. This result can also improve knowledge of biomarkers for disease, genetic disorders, and toxicology.

Conclusion

This research has identified two SNPs in the promoter region of the cynomolgus monkey *LDLR* gene, which can be used as a potential genetic marker for animals with extreme responsiveness to an atherogenic diet. Results from this study contribute to the efficient use of the cynomolgus monkey as an animal model in research related to hypercholesterolemia and atherosclerosis.

Acknowledgments

This research was funded by the Directorate General of Higher Education, Ministry of Education and Culture, Republic of Indonesia, according to contract letter 122/IT3.41.2/L2/SPK/2013. The authors would like to gratefully acknowledge the Primate Research Center of Bogor Agricultural University for providing veterinary and laboratory facilities during completion of the research.

References

- [1] Harding, J.D. 2013. Progress in genetics and genomics of nonhuman primates. *ILAR J.* 54(2): 77-81, doi: 10.1093/ilar/ilt051.

- [2] Shelton, K.A., Clarkson, T.B., Kaplan, J.R. 2012. Nonhuman Primate Models of Atherosclerosis. In: *Nonhuman Primate in Biomedical Research: Diseases*. Aben CR, Mansfield K, Tardif S, Morris T., (eds.), 2nd edition. Elsevier Press, London. 385-411.
- [3] Beynen, A.C., Katan, M.B., Van Zutphen, L.F.M. 1987. Hypo- and hyperresponder: individual differences in response of serum cholesterol concentration to change in diet. *Adv. Lipid. Res.* 22: 115-171, doi: 10.1016/B978-0-12-024922-0.50008-4.
- [4] Taher, A., Solihin, D., Sulistiyani., Sajuthi, D., Astuti, D.A. 2016. Variasi kolesterol plasma individual monyet ekor panjang (*Macaca fascicularis*) sebagai respons terhadap diet aterogenik IPB-I. *J. Veteriner.* 17(4): 548-555, <http://dx.doi.org/10.19087/jveteriner.17.4.548>.
- [5] Fergusson, B., Street, S.L., Wright, H., Pearson, C., Jia, Y., Thompson, S.L., Allibone, P., Dubay, C.J., Spindel, E., Norgren R.B.Jr. 2007. Single nucleotide polymorphism (SNPs) distinguish Indian-origin and Chinese-origin rhesus macaques (*Macaca mulatta*). *BMC Genomic.* 8: 43, doi: 10.1186/1471-2164-8-43.
- [6] Street, S.L., Kyes, R.C., Grant, R., Fergusson, B. 2007. Single nucleotide polymorphisms (SNPs) are highly conserved in rhesus (*Macaca mulatta*) and cynomolgus (*Macaca fascicularis*) macaques. *BMC Genomic.* 8: 480, doi:10.1186/1471-2164-8-480.
- [7] Flynn, S., Satkoski, J., Liche, N., Kanthaswamy, S., Smith, D.G. 2009. Genetic variation at the TNF- α promoter and malaria susceptibility in rhesus (*Macaca mulatta*) and long-tailed (*Macaca fascicularis*) macaques. *Infect. Genet. Evol.* 9(5): 769-777, doi: 10.1016/j.meegid.2009.03.011.
- [8] Uno, Y., Matsushita, A., Osada, N., Uehara, S., Kohara, S., Nagata, R., Fukuzaki, K., Utoh, M., Murayama, N., Yamazaki, H. 2010. Genetic variants of CYP3A4 and CYP3A5 in cynomolgus and rhesus macaques. *Drug. Metab. Dispos.* 38(2): 22-214, doi: 10.1124/dmd.109.029710.
- [9] Wu, H., Adkins, K. 2012. Identification of polymorphisms in genes of the immune system in cynomolgus macaques. *Mamm. Genome.* 23(7-8): 467-477, doi: 10.1007/s00335-012-9399-x.
- [10] Taher, A., Solihin, D.D., Sulistiyani., Sajuthi, D., Astuti, D. 2016. Genetic diversity within the 3'UTR of the cynomolgus macaque (*Macaca fascicularis*) *LDLR* Gene. *IJSBAR.* 26(1): 237-248.
- [11] Taher, A., Solihin, D.D., Sulistiyani., Sajuthi, D., Astuti, D.A. 2016. Single nucleotide polymorphism within the *LDLR* gene and responsiveness of cynomolgus macaque (*Macaca fascicularis*) to atherogenic diet. *Biodiversitas.* 17(2): 430-434, doi: 10.13057/biodiv/d170205.

- [12] Sudhof, T.C., Goldstein, J.L., Brown M.S., Russell M.S. 1985. The LDL receptor gene: a mosaic of exons shared with different proteins. *Science*. 21(4701): 815-822.
- [13] Goldstein, J.L., Brown, M.S. 1984. Progress in understanding the LDL receptor and HMGCoA reductase, two membrane proteins that regulate the plasma cholesterol. *J. Lipid. Res.* 25(13): 1450-1481.
- [14] Hummel, M., Li, Z., Pfaffinger, D., Neven, L., Scanu, M. 1990. Familial hypercholesterolemia in a rhesus monkey pedigree: molecular basis of LDL receptor deficiency. *Proc. Natl. Acad. Sci. USA*. 10(3): 3122-3126.
- [15] Sudhof, T.C., Van der Westhuyzen, D.R., Goldstein, J.L., Brown, M.S., Russell, D.W. 1987. Three direct repeats and a TATA-like sequence are required for regulated expression of the human low density lipoprotein receptor gene. *J. Biol. Chem.* 262(22): 10773-10779.
- [16] Flynn, S., Satkoski, J., Luche, N., Kanthaswamy, S., Smith, D.G. 2009. Genetic variation at the TNF- α promoter and malaria susceptibility in rhesus (*Macaca mulatta*) and long-tailed (*Macaca fascicularis*) macaques. *Infect. Genet. Evol.* 9(5): 39-777, doi: 10.1016/j.meegid.2009.03.011.
- [17] Fawcett, G.L., Raveendran, M., Deiros, D.R., Chen, D., Yu, F., Harris, R.A., Ren, Y., Muzny, D.M., Reid, J.G., Wheeler, D.A., Worley, K.C., Shelton, S.E., Kalin, N.H., Milosavljevic, A., Gibbs, R., Rogers, J. 2011. Characterization of single nucleotide variation in Indian-origin rhesus macaques (*Macaca mulatta*). *BMC Genomics*. 12:311, doi: 10.1186/1471.2164.12.311.
- [18] Higashino, A., Sakate, R., Kameoka, Y., Takahashi, I., Hirata, M., Tanuma, R., Masui, T., Yasutomi, Y., Osada, N. 2012. Whole-genome sequencing and analysis of the malaysian cynomolgus macaque (*Macaca fascicularis*) genome. *Genome Biol.* 13(7): R58, doi: 10.1186/gb.2012.13.7.r58.
- [19] Ebeling, M., Kung, E., See, A., Broger, C., Steiner, G., Berrera, M., Heckel, Iniguez, L., Albert, T., Schmucki, R. 2011. Genome-based analysis of nonhuman primate *Macaca fascicularis* as a model for drug safety assessment. *Genome Res.* 21(10): 646-1756, doi: 10.1101/gr.123117.111.
- [20] Rogers, J., Raveendran, M., Fawcett, G.L., Fox, A.S., Shelton, S.E., Oler, J.A., Cheverud, J., Muzny, D.M., Gibbs, R.A., Davidson, R.J., Kalin, N.H. 2013. CRHR1 genotypes, neural circuits and the diathesis for anxiety and depression. *Mol. Psychiatry*. 18(6): 700-707, doi: 10.1038/mp.2012.152.
- [21] Clarkson, T.B., Alexander, N.J., Morgan, M.T. 1988. Atherosclerosis of cynomolgus monkey hyper- and hyperresponsive to dietary cholesterol. Lack of effect of vasectomy. *Arteriosclerosis*. 8(5): 48-498.
- [22] Turley, S.D., Spady, D.K., Dietschy, J.M. 1997. Identification of a metabolic difference accounting for the hyper- and hyporesponder phenotypes of cynomolgus monkey. *J. Lipid. Res.* 38(8): 1590-1611.
- [23] Vallender, E.J., Miller, G.M. 2013. Nonhuman primate models in genomic era: a paradigm shift. *ILAR J.* 54(2): 154-165, doi:10.1093/ilar/ilt044.

Single Nucleotide Polymorphism within the Promoter Region of Cynomolgus Monkey LDLR Gene

ORIGINALITY REPORT

36%

SIMILARITY INDEX

PRIMARY SOURCES

1	lipidworld.biomedcentral.com Internet	68 words — 2%
2	biologi.ipb.ac.id Internet	61 words — 2%
3	link.springer.com Internet	58 words — 1%
4	www.jlr.org Internet	58 words — 1%
5	journal.ui.ac.id Internet	57 words — 1%
6	www.primate-biol.net Internet	49 words — 1%
7	orca.cf.ac.uk Internet	46 words — 1%
8	psasir.upm.edu.my Internet	46 words — 1%
9	Sakurai, Ken, Kei Mikamoto, Makoto Shirai, Takuma Iguchi, Kazumi Ito, Wataru Takasaki, and Kazuhiko Mori. "MicroRNA profiles in a monkey testicular injury model induced by testicular hyperthermia : miRNA profiles in hyperthermia-induced monkey testicular injury model", <i>Journal of Applied Toxicology</i> , 2016. Crossref	43 words — 1%

-
- 10 PING SU. "A cDNA Encoding a Rat Mitochondrial Cytochrome P450 Catalyzing Both the 26-Hydroxylation of Cholesterol and 25-Hydroxylation of Vitamin D₃: Gonadotropic Regulation of the Cognate mRNA in Ovaries", DNA and Cell Biology, 11/1990 43 words — 1%
Crossref
-
- 11 Yasuhiro Uno, Norie Murayama, Masami Kato, Saki Tanaka, Tomoko Ohkoshi, Hiroshi Yamazaki. " Genetic Variants of Glutathione -Transferase and in Cynomolgus Macaques: Identification of GSTT Substrates and Functionally Relevant Alleles ", Chemical Research in Toxicology, 2018 42 words — 1%
Crossref
-
- 12 Sang-Koo Woo, Hyun-Sik Kang. "The apolipoprotein CIII T2854G variants are associated with postprandial triacylglycerol concentrations in normolipidemic Korean men", Journal of Human Genetics, 2003 41 words — 1%
Crossref
-
- 13 M. Hummel. "Familial Hypercholesterolemia in a Rhesus Monkey Pedigree: Molecular Basis of Low Density Lipoprotein Receptor Deficiency", Proceedings of the National Academy of Sciences, 04/15/1990 40 words — 1%
Crossref
-
- 14 dspace.nwu.ac.za 40 words — 1%
Internet
-
- 15 www.primateproducts.com 36 words — 1%
Internet
-
- 16 goescholar.uni-goettingen.de 34 words — 1%
Internet
-
- 17 www.hgucolombo.org 32 words — 1%
Internet
-
- 18 "The LDL Receptor Locus in Familial Hypercholesterolemia: Mutational Analysis of a Membrane Protein", Annual Review of Genetics, 12/1990 30 words — 1%
Crossref

-
- 19 Tveten, K.. "Analysis of alternatively spliced isoforms of human LDL receptor mRNA", *Clinica Chimica Acta*, 200611
30 words — 1%
Crossref
-
- 20 pubs.sciepub.com
Internet 29 words — 1%
-
- 21 utsouthwestern.influent.utsystem.edu
Internet 28 words — 1%
-
- 22 Betsy Ferguson, David Glenn Smith. "Evolutionary History and Genetic Variation of *Macaca mulatta* and *Macaca fascicularis*", Elsevier BV, 2015
26 words — 1%
Crossref
-
- 23 Jacob C. Cooper, Christopher J. Leonard, Brent S. Pedersen, Clayton M. Carey, Aaron R. Quinlan, Nels C. Elde, Nitin Phadnis. "Endless Conflicts: Detecting Molecular Arms Races in Mammalian Genomes", Cold Spring Harbor Laboratory, 2019
25 words — 1%
Crossref Posted Content
-
- 24 Lina Herlina, Sobir Sobir, Kurniawan Rudi Trijatmiko. "Identification of Quantitative Trait Loci (QTL) for Awn, Incomplete Panicle Exertion and Total Spikelet Number in an F2 Population Derived from A Backcross Inbred Line, Bio-148, and the Recurrent Parent, IR64", *Makara Journal of Science*, 2016
24 words — 1%
Crossref
-
- 25 www.science.gov
Internet 23 words — 1%
-
- 26 Mari C. Vázquez-Borrego, Antonio C. Fuentes-Fayos, Manuel D. Gahete, Justo P. Castaño et al. "The Pituitary Gland is a Novel Major Site of Action of Metformin in Non-Human Primates: a Potential Path to Expand and Integrate Its Metabolic Actions", *Cellular Physiology and Biochemistry*, 2018
21 words — 1%
Crossref
-

Ryan Sugihakim, Husin Alatas. "Application of a Boltzmann-

- 27 entropy-like concept in an agent-based multilane traffic model", Physics Letters A, 2016
Crossref 21 words — 1%
-
- 28 parasitesandvectors.biomedcentral.com
Internet 20 words — 1%
-
- 29 Min Wang, Yian Wang, Ming You. " IDENTIFICATION OF GENETIC POLYMORPHISMS THROUGH COMPARATIVE DNA SEQUENCE ANALYSIS ON THE K- GENE: IMPLICATIONS FOR LUNG TUMOR SUSCEPTIBILITY ", Experimental Lung Research, 2009
Crossref 19 words — < 1%
-
- 30 mdanderson.influent.utsystem.edu
Internet 18 words — < 1%
-
- 31 J. den Dunnen, S. Antonarakis. "Nomenclature for the description of human sequence variations", Human Genetics, 2014
Crossref 18 words — < 1%
-
- 32 scholar.sun.ac.za
Internet 16 words — < 1%
-
- 33 elib.suub.uni-bremen.de
Internet 15 words — < 1%
-
- 34 repositorio.unesp.br
Internet 14 words — < 1%
-
- 35 Chen, Jinyi, Zhaofeng Huang, Chaoxian Zhang, Hongjuan Huang, Shouhui Wei, Jingchao Chen, and Xu Wang. "Molecular basis of resistance to imazethapyr in redroot pigweed (Amaranthus retroflexus L.) populations from China", Pesticide Biochemistry and Physiology, 2015.
Crossref 14 words — < 1%
-
- 36 dmd.aspetjournals.org
Internet 14 words — < 1%

-
- 37 media.neliti.com Internet 14 words — < 1%
-
- 38 instagatrix.com Internet 11 words — < 1%
-
- 39 Julinton Sianturi, Kindi Farabi, Tri Mayanti, Desi Harneti, Darwati Darwati, Unang Supratman, Khalijah Awang, Hideo Hayashi. "Antioxidant Constituents from the Bark of *Aglaia eximia* (Meliaceae)", *Makara Journal of Science*, 2016
Crossref 11 words — < 1%
-
- 40 Priyasma Bhoumik, Alberto Del Rio-Espinola, Florian Hahne, Jonathan Moggs, Olivier Grenet. "Translational Safety Genetics", *Toxicologic Pathology*, 2016
Crossref 10 words — < 1%
-
- 41 www.nature.com Internet 10 words — < 1%
-
- 42 www.scoortertechno.net Internet 10 words — < 1%
-
- 43 Andreas Walter Kuss. "Identification of a nonsense mutation in the very low-density lipoprotein receptor gene (VLDLR) in an Iranian family with dysequilibrium syndrome", *European Journal of Human Genetics*, 02/2008
Crossref 10 words — < 1%
-
- 44 Dyah Maharani, Hee-Bok Park, Jae-Bong Lee, Chae-Kyoung Yoo et al. "Association of the gene encoding stearoyl-CoA desaturase (SCD) with fatty acid composition in an intercross population between Landrace and Korean native pigs", *Molecular Biology Reports*, 2012
Crossref 10 words — < 1%
-
- 45 M. Ebeling, E. Kung, A. See, C. Broger et al. "Genome-based analysis of the nonhuman primate *Macaca fascicularis* as a model for drug safety assessment", *Genome Research*, 2011
Crossref 10 words — < 1%

-
- 46 www.askjpc.org Internet 9 words — < 1%
-
- 47 Tanja Haus, Betsy Ferguson, Jeffrey Rogers, Gaby Doxiadis et al. "Genome typing of nonhuman primate models: implications for biomedical research", Trends in Genetics, 2014 Crossref 9 words — < 1%
-
- 48 www.pubmedcentral.nih.gov Internet 9 words — < 1%
-
- 49 Suhana, Sutyarso, Moeloek, Soeradi, Sri Sukmaniah, Supriatna. " The effects of feeding an Asian or Western diet on sperm numbers, sperm quality and serum hormone levels in cynomolgus monkeys () injected with testosterone enanthate (TE) plus depot medroxyprogesterone acetate (DMPA) ", International Journal of Andrology, 2001 Crossref 9 words — < 1%
-
- 50 www.wanprc.org Internet 9 words — < 1%
-
- 51 Muhammad Nur Kholis, Yopi Yopi, Anja Meryandini. "Xylooligosaccharide Production from Tobacco Stalk Xylan using Xylanase Streptomyces sp. BO 3.2", Makara Journal of Science, 2015 Crossref 9 words — < 1%
-
- 52 ilarjournal.oxfordjournals.org Internet 8 words — < 1%
-
- 53 nopr.niscair.res.in Internet 8 words — < 1%
-
- 54 Yu, R.M.K.. "Induction of hepatic choriogenin mRNA expression in male marine medaka: A highly sensitive biomarker for environmental estrogens", Aquatic Toxicology, 20060525 Crossref 8 words — < 1%

-
- 55 www.alice.cnptia.embrapa.br 8 words — < 1%
Internet
-
- 56 E. J. Vallender, G. M. Miller. "Nonhuman Primate Models in the Genomic Era: A Paradigm Shift", *ILAR Journal*, 2013 8 words — < 1%
Crossref
-
- 57 *Handbook of Experimental Pharmacology*, 1994. 8 words — < 1%
Crossref
-
- 58 Cheng Xue, Muthuswamy Raveendran, R. Alan Harris, Gloria L. Fawcett et al. "The population genomics of rhesus macaques () based on whole-genome sequences ", *Genome Research*, 2016 8 words — < 1%
Crossref
-
- 59 Hind Muallem, Kari E. North, Masao Kakoki, Mary K. Wojczynski et al. "Quantitative effects of common genetic variations in the 3'UTR of the human LDL-receptor gene and their associations with plasma lipid levels in the Atherosclerosis Risk in Communities study", *Human Genetics*, 2007 7 words — < 1%
Crossref
-
- 60 Elene Haralambous, Saoirse O. Dolly, Martin L. Hibberd, David J. Litt et al. "Factor H, a regulator of complement activity, is a major determinant of meningococcal disease susceptibility in UK Caucasian patients", *Scandinavian Journal of Infectious Diseases*, 2009 6 words — < 1%
Crossref
-
- 61 David Rhainds, Louise Brissette. "Low density lipoprotein uptake: holoparticle and cholesteryl ester selective uptake", *The International Journal of Biochemistry & Cell Biology*, 1999 6 words — < 1%
Crossref
-

EXCLUDE
BIBLIOGRAPHY

OFF