

DATA ARTIKEL ILMIAH

Judul	: A Novel Adaptive LFC Based on MPC Method
Penulis	: Adelhard Beni Rehiara, Naoto Yorino, Yutaka Sasaki, Yoshifumi Zoka
Abstrak	: This article presents a novel load frequency control (LFC) method using an adaptive internal model of a power system, where model predictive control (MPC) technique is applied to the internal model, which is being updated on-line. The proposed method will improve the LFC performance by reducing model identification error and by handling the disturbance effectively. Novelty lies in the combination of MPC and the effective use of the internal model to meet the response time of real world LFC control, which is typically equivalent to generation dispatch control cycle. The effectiveness of the proposed control is confirmed by simulations using a three-area power system model. The results show that the proposed method can accurately identify the target plant and successfully handle disturbances to realize a reliable LFC.
Keywords	: IMC; MPC; LSM; LFC; power system
Nama Jurnal	: IEEJ Trans. On Electrical and Electronic Engineering
Volume/Nomor	: Volume14, Issue8
Edisi	: August 2019
Alamat web	: https://onlinelibrary.wiley.com/doi/abs/10.1002/tee.22912
Kategori	: Jurnal Internasional (Q3)
SJR	: 0.23 (2019)



IEEJ TRANSACTIONS ON ELECTRICAL AND ELECTRONIC ENGINEERING

VOLUME 14, NO. 8, AUGUST 2019

OFFICIAL JOURNAL OF THE INSTITUTE OF ELECTRICAL ENGINEERS OF JAPAN

電気学会

SCI registered

WILEY
ISSN 1931-4973

INSTITUTE OF ELECTRICAL ENGINEERS OF JAPAN



IEEEJ

TRANSACTIONS ON ELECTRICAL AND ELECTRONIC ENGINEERING OFFICIAL JOURNAL OF THE INSTITUTE OF ELECTRICAL ENGINEERS OF JAPAN

EDITORIAL BOARD

Chairperson

Satoshi Matsumoto *Shibaura Institute of Technology*

Vice Chairperson

Kiyoshi Ohishi *Nagaoka University of Technology*

Members

Akinori Oda
Chiba Institute of Technology

Takaaki Manaka
Tokyo Institute of Technology

Takashi Kosaka
Nagoya Institute of Technology

Junichi Itoh
Nagaoka University of Technology

Minoru Fukumi
Tokushima University

Takashi Tamada
Mitsubishi Electric Corporation

Takeshi Kawano
Toyohashi University of Technology

Takashi Abe
Niigata University

Atsushi Ishigame
Osaka Prefecture University

Toshiyuki Sawa
Hitachi, Ltd.

Editorial Advisory Board

Narendra Ahuja
University of Illinois

David Howe
University of Sheffield

Ned Mohan
University of Minnesota

Alain Sabot
Electricité de France R&D

Frede Blaabjerg
Aalborg University

CJ Kim
University of California

Gunter Mueller
University of Freiburg

Göran Stemme
Royal Institute of Technology

Dushan Boroyevich
Virginia Polytechnic Institute and
State University

Johann Kolar
Swiss Federal Institute of
Technology(ETH) Zurich

Richard Muller
University of California, Berkeley

Seung-Ki Sul
Seoul National University

Hsiao-Dong Chiang
Cornell University

Duk-Dong Lee
Kyungpook National University

Oliver Paul
University of Freiburg

Masayoshi Tomizuka
University of California, Berkeley

Kukjin Chun
Seoul National University

Emil Levi
Liverpool John Moores University

Fang Z. Peng
Michigan State University

Edson Hirokazu Watanabe
Federal University of Rio de
Janeiro/COPPE

Dominique Collard
LIMMS/CNRS-IIS

Mark D. Levine
Lawrence Berkeley National
Laboratory

Francesco Profumo
Politecnico di Torino

Bogdan M. Wilamowski
Auburn University

Gille Delapierre
CEA-LETI

Chen-Ching Liu
Iowa State University

Hugh P.C. Robinson
University of Cambridge

Stephen Williamson
University of Manchester

Yogesh B. Gianchandani
University of Michigan

Nico de Rooij
University Neuchatel

Hans Zappe
University of Freiburg

THE INSTITUTE OF ELECTRICAL ENGINEERS OF JAPAN

President

President-Elect

Vice President, Planning & General Affairs

Vice President, Treasurer

Vice President, Editorial Affairs

Vice President, R&D Management

Director, Planning & General Affairs

Director, Treasurer

Director, Editorial Affairs

Director, R&D Management

Executive Director

Auditor

Auditor

President Fundamental and Materials Society

President Power and Energy Society

President, Electronics, Information, and Systems Society

President Industry Applications Society

President Sensors and Micromachines Associated Society

President Hokkaido Branch

President Tohoku Branch

President Tokyo Branch

President Tokai Branch

President Hokuriku Branch

President Kansai Branch

President Chugoku Branch

President Shikoku Branch

President Kyushu Branch

Toshiko Nakagawa

Shiro Saito

Shinichi Imai

Takehiko Seiji

Satoshi Matsumoto

Yoshizumi Serizawa

Yuuji Minami

Naoto Fujioka

Kiyoshi Ohishi

Akihiro Daikoku

Noboru Fujiwara

Toshiki Ono

Tohru Katsuno

Hiroyuki Nishikawa

Kenji Yoshimura

Yasuhiko Jimbo

Noriko Kawakami

Kazusuke Maenaka

Yutaka Fujii

Makoto Yoshizawa

Hiroshi Okamoto

Hirofumi Toyoda

Hisao Taoka

Michihiro Tadokoro

Eiji Hiraki

Yoshikazu Minamoto

Hideyuki Yamashina

IEEEJ

TRANSACTIONS ON ELECTRICAL AND ELECTRONIC ENGINEERING

T A B L E O F C O N T E N T S

VOL.14, No.8, 2019

PAPERS

Assessment of Charge Behavior in Water Tree-Degraded Cables under Pulse Voltages N. Ra, R. Yamane, H. Futami, T. Kawashima, Y. Murakami and N. Hozumi	1126
Aging Behavior of Flame-Retardant Cross-Linked Polyethylene in Nuclear Power Plant Environments Z. Yang, T. Kaneko, N. Hirai and Y. Ohki	1133
Analysis of Fault of Insulation Aging of Oiled Paper of a Large-Scale Power Transformer and the Prediction of its Service Life P. Xie	1139
A Novel Adaptive LFC Based on MPC Method A. B. Rehiara, N. Yorino, Y. Sasaki and Y. Zoka	1145
Average Value Model of Modular Multilevel Converters for Switching Overvoltage Simulation in VSC-HVDC Grids N. Chen, L. Qi, W. Hou and X. Cui	1153
Frequency Domain Analysis of Wind Farm on the Damping Characteristics of a Nearby Synchronous Generator Y. Cai, C. Zhang, L. Zheng and X. Cai	1164
Optimally Selecting the Location of A Multiple of D-STATCOMs for the Improvement of SARFI _X Due to Faults in the IEEE 33-Bus Distribution System B. Q. Khanh and M. Hojo	1172
An Optimized GRNN-Enabled Approach for Power Transformer Fault Diagnosis A. Li, X. Yang, Z. Xie and C. Yang	1181
Transient Stability Assessment and Control System for Power System H. Wang and P. He	1189
A Variable-Step Size NLMS Algorithm Based on the Cross-correlation between the Squared Output Error and the Near-End Input Signal F. Casco-Sanchez, M. Lopez-Guerrero, S. Javier-Alvarez and R. C. Medina-Ramirez	1197
Object Classification Integrating Results of Each Scan Line with Low-Resolution LIDAR T. Nagashima, T. Nagasaki and H. Matsubara	1203
Derivation of NARX Models by Expanding Activation Functions in Neural Networks H. Inaoka, K. Kobayashi, S. Nebuya, H. Kumagai, H. Tsuruta and Y. Fukuoka	1209
Prediction Model on Disturbance of Maintenance Operation During Real-Time Pricing Adaptive Control for Building Air-Conditioners S. Matsukawa, M. Takehara, H. Otsu, J. Morikawa, T. Inaba, S. Kondo and C. Ninagawa	1219
Robust Adaptive Maneuvering Control for an Unmanned Surface Vessel with Uncertainties H. Huang and Y. Fan	1226

Continued overleaf

Contents continued...

An Autoencoder-Based Piecewise Linear Model for Nonlinear Classification Using Quasilinear Support Vector Machines W. Li, P. Liang and J. Hu	1236
Horn and Lens Antenna with a Small Antenna Substrate and High Production Tolerance for 77-GHz Automotive Long-Range Radar A. Kuriyama, H. Nagaishi and H. Kuroda	1244
Influence of Permanent Magnet Parameters on Output Performance of a High-Speed Permanent-Magnet Generator H. Qiu, X. Zhao, C. Yang, R. Yi and Y. Wei	1254
Evaluation of Dynamic and Static Eccentric Faults in Turbo Generator Y. Wu, Q. Ma, B. Cai and Y. He	1262

LETTERS

Arrhythmia Detection in Electrocardiogram Based on Recurrent Neural Network Encoder-Decoder with Lyapunov Exponent Y. Park and I. D. Yun	1273
A Distributed Jamming Signal Transmission Method Considering Node Density to Prevent Eavesdropping in Wireless Networks Y. Taniguchi and M. Nakayama	1275

IEEJ TRANSACTIONS ON ELECTRICAL AND ELECTRONIC ENGINEERING, (ISSN Print: 1931-4973; Online: 1931-4981), is published monthly by Wiley Subscription Services, Inc., a Wiley Company, 111 River St., Hoboken, NJ 07030-5774 USA.

Postmaster: Send all address changes to *IEEJ TRANSACTIONS ON ELECTRICAL AND ELECTRONIC ENGINEERING*, John Wiley & Sons Inc., c/o The Sheridan Press, PO Box 465, Hanover, PA 17331, USA.

Copyright and Copying (in any format)

Copyright © 2019 Institute of Electrical Engineers of Japan. All rights reserved. No part of this publication may be reproduced, stored or transmitted in any form or by any means without the prior permission in writing from the copyright holder. Authorization to photocopy items for internal and personal use is granted by the copyright holder for libraries and other users registered with their local Reproduction Rights Organisation (RRO), e.g. Copyright Clearance Center (CCC), 222 Rosewood Drive, Danvers, MA 01923, USA (www.copyright.com), provided the appropriate fee is paid directly to the RRO. This consent does not extend to other kinds of copying such as copying for general distribution, for advertising or promotional purposes, for republication, for creating new collective works or for resale. Permissions for such reuse can be obtained using the RightsLink "Request Permissions" link on Wiley Online Library. Special requests should be addressed to: permissions@wiley.com

The copyright notice appearing at the bottom of the first page of an article in this journal indicates the copyright owner's consent that copies of the article may be made for personal or internal use, or for the personal or internal use of specific clients, on the condition that the copier pay for copying beyond that permitted by Sections 107 or 108 of the US Copyright Law.

This consent does not extend to the other kinds of copying, such as copying for general distribution, for advertising or promotional purposes, for creating new collective work, or for resale. Such permission requests and other permission inquiries should be addressed to the Permissions Department, c/o John Wiley & Sons, Inc., 111 River Street, Hoboken, NJ 07030; 201-748-6011, fax 201-748-6008, or visit <http://www.wiley.com/go/permissions>.

Information for subscribers

IEEJ Transactions on Electrical and Electronic Engineering is published in 12 issues per year. FTE-based pricing, based on the overall demand and on the size and type of the subscribing institution (academic, government, hospital or corporate, applies for this Journal. Institutional subscription prices for 2019 are: FTE small print & online: US\$1867 (US and Rest of World), €1209 (Europe), £956 (UK). FTE medium print & online: US\$2572 (US and Rest of World), €1660 (Europe), £1316 (UK). FTE large print & online: US\$3518 (US and Rest of World), €2270 (Europe), £1796 (UK). Prices are exclusive of tax. Australian GST/HST, Canadian GST and European VAT will be applied at the appropriate rates. For more information on current tax rates, please go to <https://onlinelibrary.wiley.com/library-info/products/price-lists/payment>. The institutional price includes online access to the current and all online back files to January 1st 2019, where available. For other pricing options, including access information and terms and conditions, please visit <https://onlinelibrary.wiley.com/terms-and-conditions>

Delivery Terms and Legal Title: Where the subscription price includes print issues and delivery is to the recipient's address, delivery terms are Delivered at place (DAP); the recipient is responsible for paying any import duty or taxes. Title to all issues transfers Free of Board (FOB) our shipping point, freight prepaid. We will endeavour to fulfill claims for missing or damaged copies within six months of publication, within our reasonable discretion and subject to availability.

Back issues: Single issues from current and recent volumes are available at the current single issue price from cs-journals@wiley.com. Earlier issues may be obtained from Periodicals Service Company, 351 Fairview Avenue – Ste 300, Hudson, NY 12534, USA. Tel: +1 518 822-9300, Fax: +1 518 822-9305, Email: psc@periodicals.com.

Disclaimer: The Publisher, *IEEJ* and Editors cannot be held responsible for errors or any consequences arising from the use of information contained in this journal; the views and opinions expressed do not necessarily reflect those of the Publisher, the *IEEJ*, and Editors, neither does the publication of advertisements constitute any endorsement by the Publisher, *IEEJ* and Editors of the products advertised.

Publisher: *IEEJ Transactions on Electrical and Electronic Engineering* is published by Wiley Subscription Services, Inc., A Wiley Company, Hoboken, USA.

Contact details

Journals Customer Services: For ordering information, claims and any enquiry concerning your journal subscription please go to <https://hub.wiley.com/community/support/onlinelibrary> or contact your nearest office.

Americas: Email: cs-journals@wiley.com; Tel: +1 781 388 8598 or +1 800 835 6770 (toll free in the USA & Canada).

Europe, Middle East and Africa: Email: cs-journals@wiley.com; Tel +44 (0) 1865 778315.

Asia Pacific: Email: cs-journals@wiley.com; Tel: +65 6511 8000.

Japan: For Japanese speaking support, Email: cs-japan@wiley.com
Visit our Online Customer Help available in 7 languages at <https://hub.wiley.com/community/support/onlinelibrary>

Production Editor: Girlee Salmingo (teeprod@wiley.com).

Advertising Sales: Inquiries regarding advertising should be forwarded to Advertising Sales Manager, Joe Tomaszewski, John Wiley & Sons, 111 River Street, Hoboken, NJ 07030; 201-748-8895, jtomaszews@wiley.com

Reprints: COMMERCIAL REPRINTS: Email: corporate-saleseurope@wiley.com; corporatesalesusa@wiley.com; or corporatesalesaustralia@wiley.com

AUTHOR REPRINTS (50 – 500 copies): Order online: Sheridan offprint: www.sheridan.com/wiley/eoc

Wiley's Corporate Citizenship initiative seeks to address the environmental, social, economic, and ethical challenges faced in our business and which are important to our diverse stakeholder groups. Since launching the initiative, we have focused on sharing our content with those in need, enhancing community philanthropy, reducing our carbon impact, creating global guidelines and best practices for paper use, establishing a vendor code of ethics, and engaging our colleagues and other stakeholders in our efforts. Follow our progress at www.wiley.com/go/citizenship

Wiley is a founding member of the UN-backed HINARI, AGORA, and OARE initiatives. They are now collectively known as Research4Life, making online scientific content available free or at nominal cost to researchers in developing countries. Please visit Wiley's Content Access – Corporate Citizenship site: <http://www.wiley.com/WileyCDA/Section/id-390082.html>

Indexing and Abstracting: The contents of this journal are indexed or abstracted in: Advanced Technologies & Aerospace Database (ProQuest), INSPEC (IET), Journal Citation Reports/Science Edition (Clarivate Analytics), Materials Science & Engineering Database (ProQuest), PASCAL Database (INIST/CNRS), Science Citation Index Expanded (Clarivate Analytics), SciTech Premium Collection (ProQuest), SCOPUS (Elsevier), Technology Collection (ProQuest), Web of Science (Clarivate Analytics).

All other correspondence should be addressed to the *IEEJ Transactions on Electrical and Electronic Engineering*, Publisher, c/o John Wiley & Sons, Inc., 111 River Street, Hoboken, NJ 07030, U.S.A.

Printed in Singapore by C.O.S. Printers Pte Ltd.

For submission instructions, subscription, and all other information visit: <https://onlinelibrary.wiley.com/journal/19314981>

View this journal online at <https://onlinelibrary.wiley.com/journal/19314981>

This paper meets the requirements of ANSI/NISO Z39. 48-1992 (Permanence of Paper).



A Novel Adaptive LFC Based on MPC Method

Adelhard Beni Rehiara^{*,**}, Non-member

Naoto Yorino^{*a}, Fellow

Yutaka Sasaki^{*}, Member

Yoshifumi Zoka^{*}, Senior Member

This article presents a novel load frequency control (LFC) method using an adaptive internal model of a power system, where model predictive control (MPC) technique is applied to the internal model, which is being updated on-line. The proposed method will improve the LFC performance by reducing model identification error and by handling the disturbance effectively. Novelty lies in the combination of MPC and the effective use of the internal model to meet the response time of real world LFC control, which is typically equivalent to generation dispatch control cycle. The effectiveness of the proposed control is confirmed by simulations using a three-area power system model. The results show that the proposed method can accurately identify the target plant and successfully handle disturbances to realize a reliable LFC. © 2019 Institute of Electrical Engineers of Japan. Published by John Wiley & Sons, Inc.

Keywords: IMC; MPC; LSM; LFC; power system

Received 8 June 2018; Revised 9 January 2019

1. Introduction

The objective of load frequency control (LFC) often referred to as AGC is to maintain the power system frequency against continuous load changes and fluctuations. Elgerd and Fosha [1] first addressed the optimal control concept for frequency control design of an interconnected power system and a multi-area power system started to be considered for LFC synthesis. Then, various works proposed numerous schemes on LFC control [2–14]. Many recent studies are concerned with robust control techniques such as H_∞ , LMI to deal effectively with system disturbances and uncertainties [4]. Some intelligent methods were also applied to the LFC problem including neural networks [5–7], fuzzy logic, and genetic algorithms [8–10]. Recently, model predictive control (MPC) has received much attention, in which a design of MPC for a system including wind turbines was reported in ref. [11] and a comparison with conventional proportional–integral (PI) control was reported in Ref. [12].

Internal model control (IMC) is well known as model-based controllers. IMC can use the internal model to predict the future output of the plant and also to make correction of the output. This method can be used to control SISO systems [15], or to combine with the other controllers such as PI/PID controller [15–22], fuzzy controller [23,24], neural network [25], or MPC [24–27]. The combined design of IMC and MPC was proposed a few decades ago [11,12] and until now the variant of both controllers has been increasing for the process controls. The merit of these approaches is the ability to predict the future behavior of the controlled plant based on the internal models, while a mismatch in the internal model can degenerate the performance of the controllers. An adaptive model may be a solution. Many previous research studies have succeeded to apply the IMC adaptive model

into a controller i.e. PI/PID [15,16,21], fuzzy controller [24], or MPC [26].

Nowadays, frequency stability is a major issue in power system operation due to a rapid increase in renewables such as wind and solar generations. The complexity is increasing in the operation of a multi-area power system, where the system characteristics may vary depending on system conditions. While the system conditions are changing, the present LFC control cycle is relatively slow, equivalent to the generation dispatch control cycle in a typical power system. Therefore, a more sophisticated LFC method is required to identify the target system characteristics to improve the stability.

This article presents a novel LFC method, where an adaptive MPC using an IMC model that was repeatedly updated by LSM in real time operation is proposed. Novelty lies in the effective combination of IMC and MPC techniques to meet typical LFC conditions that is a slow control cycle for various systems. It is shown that the proposed adaptive MPC effectively works keeping the system frequency at a desired set point, while the target model is successfully identified. The effectiveness of the proposed controller is demonstrated by the simulations using a standard LFC model representing a three-area interconnected power system.

2. Proposed Controller

2.1. Outline Figure 1 outlines the control scheme for LFC. An IMC structure is used to identify LFC dynamics by observing plant input and output signals. LSM is used for adaptive parameter estimation of the plant model. MPC is adopted as the main controller, where the Laguerre function is used to provide optimal control. In this power system model, the individual areas are interconnected by tie lines. Inside the area, each block is described as below.

- Each area is represented by a typical model for the LFC study, which is explained in Section 2.2.
- The internal model structure is explained in Section 2.3, which is a simplified power system model. Parameters of

^a Correspondence to: Naoto Yorino. E-mail: yorino@hiroshima-u.ac.jp

^{*}Graduate School of Engineering, Hiroshima University, 1-4-1, Kagamiyama Higashi-Hiroshima, Hiroshima 739-8527, Japan

^{**}Electrical Engineering Department, University of Papua, Jl. Gunung Salju Amban Manokwari 98314, Indonesia

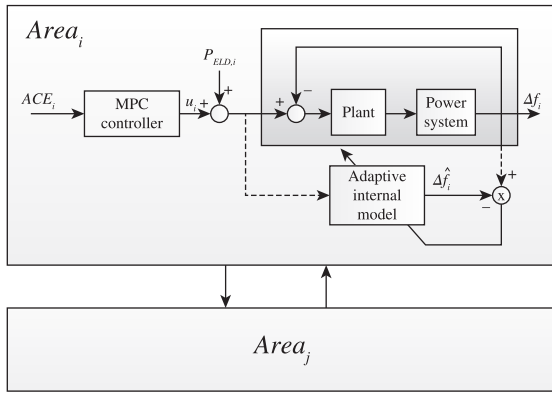


Fig. 1. Proposed adaptive LFC scheme based on MPC

the internal model are identified using the LSM algorithm as an adaptive model, which is used to determine optimal parameters for MPC.

- A MPC controller will be the main controller in the proposed LFC scheme where Laguerre functions are used. Section 2.4 describes the proposed control algorithm.

2.2. Power system model

Power system model in Fig. 1 is used to represent each area. Mathematical model is given in the Appendix. Based on the simulation using this model, control signal to the plant (P_{LFC} , $\hat{P}(k|k-1)$, $P[k]$) and the response of the plant (area control error [ACE]) are observed. The ACE signal to the plant is obtained from (1).

$$ACE_i = \Delta P_{tie,i} + \beta_i \Delta f_i \quad (1)$$

Figure 2(a) represents a typical configuration of LFC for thermal power plants in each area. An important issue in a practical LFC is that the LFC signal to the plant, P_{LFC} , is added to ELD signals whose sum is the total demand $\hat{P}(k|k-1)$ predicted at $k-1$. The control signals are sent to thermal power plants typically of the order of minutes to change the set points of the individual plants; in the measurement of ACE, a low-pass filter is usually used to eliminate fast component of the signal [28]. This implies that the LFC signal should be determined based on a suitable plant model whose time scale meets the LFC control cycle. This point is neglected in most of the previous works. Furthermore, the plant input signals are limited by ramp rate constraints of individual plants, typically 3%/min (0.05%/s). Therefore, this article utilizes the singular perturbation method [29] to focus on the slow dynamics of LFC control. In this method, the original system

$$\begin{aligned} \dot{x}_S &= f_S(x_S, x_F, u) \\ \varepsilon \dot{x}_F &= f_F(x_S, x_F, u) \end{aligned} \quad (2)$$

is represented by the first order approximation of the slow subsystem as below:

$$\begin{aligned} \dot{x}_S &= f_S(x_S, x_F, u) \\ 0 &= f_F(x_S, x_F, u) \end{aligned} \quad (3)$$

ε is a parameter for time scale separation, which is assumed about 1 min in this study according to typical real system setting. This treatment is equivalent to the manipulation that all the time constants less than 1 min are set to zero. As a result, the fast dynamic equations for AVR, speed governor, and power system stabilizer are treated as static equations. In this situation, the

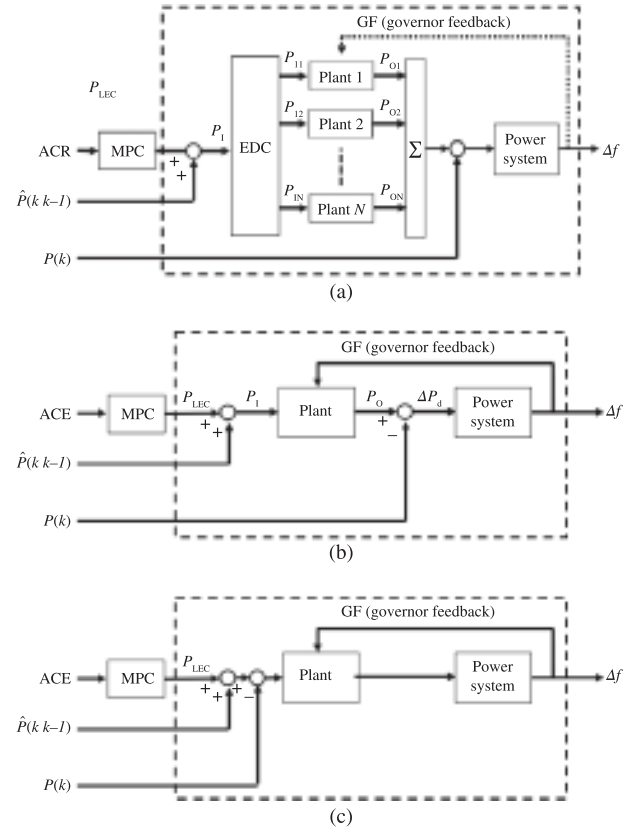


Fig. 2. Detailed and simplified models. (a) Detailed model, (b) intermediate model (c) simplified model

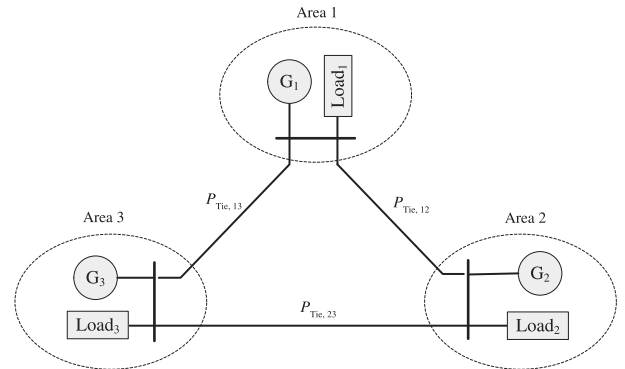


Fig. 3. Three area power system model

original model is approximated by Fig. 2(b) and furthermore by Fig. 2(c) by aggregating all the power plants.

Note that the ELD signal at time point k is computed based on the demand prediction at $k-1$ in the past, while the total demand is measured at time k , the present time. The error of the demand prediction is counted as a disturbance. In the original model, control signal to the plant (P_{LFC} , $\hat{P}(k|k-1)$, $P[k]$) and the response of the plant (ACE) are observed.

2.3. Simplified power system model for study area

This article uses an internal model of the target system that consists of essential frequency dynamics restricted by the ramp rate constraint, where by essential is meant, the system dynamics of the order of 10 s to minutes that exclude fast transient dynamics. To capture the essential dynamics only, the following simplified model is used:

$$ACE(k+1) = \hat{a} \cdot ACE(k) + \hat{b} \cdot P_I(k) \quad (4)$$

Table I. Parameters of the three area power system

Area	d (pu/H _z)	$2H$ (pu s)	R (Hz/pu)	T_g (s)	T_t (s)	β (pu/H _z)	T_{ij} (pu/H _z)
1	0.015	0.1667	3.00	0.08	0.40	0.3483	$T_{12} = 0.20$ $T_{13} = 0.25$
2	0.016	0.2017	2.73	0.06	0.44	0.3827	$T_{21} = 0.20$ $T_{23} = 0.12$
3	0.015	0.1247	2.82	0.07	0.30	0.3692	$T_{31} = 0.25$ $T_{32} = 0.12$

Table II. Disturbance settings

	Disturbance	
	Random	Step change
Case I	Applied	Not applied
Case II	Applied	0.2 pu at $t = 40$
Case III	Applied	-0.2 pu at $t = 40$

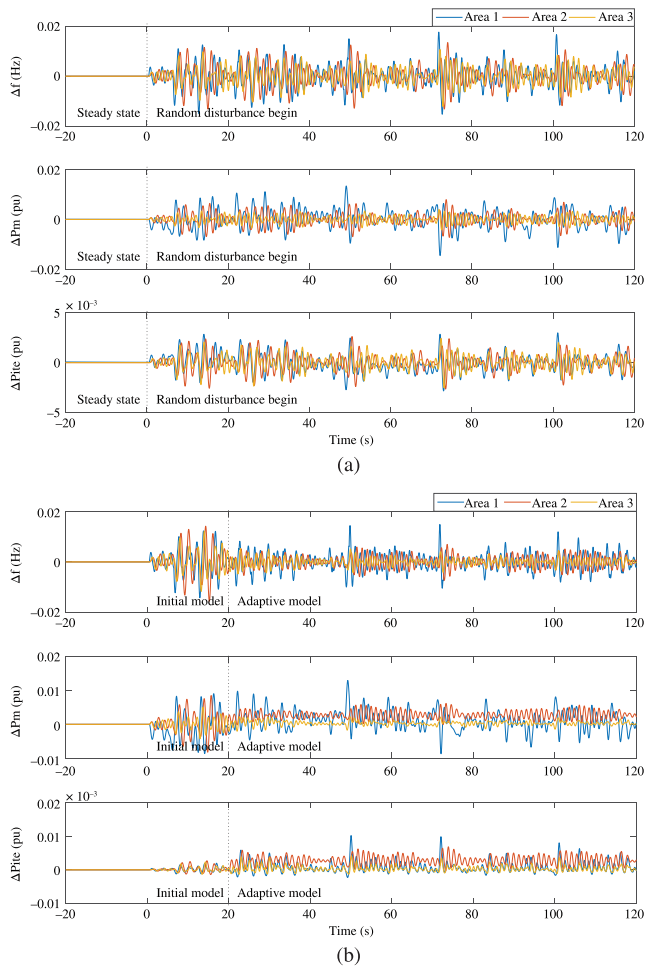


Fig. 4. Controller responses in case I. (a) Conventional MPC controller, (b) proposed adaptive controller

where

$$P_I(k) = \hat{P}(k|k-1) + P_{LFC}(k) - P(k) \quad (5)$$

Using the input and output signals measured in the real plant, adaptive parameter estimation is performed using LSM. In the actual power system, $ACE(k)$ and $P_I(k)$ are observed, and therefore, the set of most recent data will be used to estimate the

parameter set (\hat{a} and \hat{b}) using the LSM algorithm. This process is very simple and reliable to obtain real-time estimation. Note that discrete system (4) is almost equivalent to the first lag system with sampling time h whose gain and time constants are given by:

$$K = \hat{b}/(1 - \hat{a}), \quad T = h/(1 - \hat{a})$$

2.4. Formulation A MPC is a type control to predict the behavior of the controlled plant and then to determine an optimal control. To apply MPC, the plant model is redefined based on (4) as follows:

$$\begin{aligned} x(k+1) &= A x(k) + B P_I(k) \\ y(k) &= C x(k) \end{aligned} \quad (6)$$

or

$$\begin{aligned} \begin{bmatrix} \Delta ACE(k+1) \\ ACE(k+1) \end{bmatrix} &= \begin{bmatrix} \hat{a} & 0 \\ \hat{a} & 1 \end{bmatrix} \begin{bmatrix} \Delta ACE(k) \\ ACE(k) \end{bmatrix} + \begin{bmatrix} \hat{b} \\ \hat{b} \end{bmatrix} \Delta P_I(k) \\ y(k) &= [0 \ 1] \begin{bmatrix} \Delta ACE(k) \\ ACE(k) \end{bmatrix} \end{aligned}$$

where

$$\Delta ACE(k) = ACE(k) - ACE(k-1)$$

$$\Delta P_I(k) = P_I(k) - P_I(k-1)$$

It should be mentioned that all the parameters of (6) are already known by the parameter estimation by LSM. This parameter is based on the response of the real power system where all the operational constraints are embedded. Then, using the MPC theory, the following cost function is minimized.

$$J = \sum_{m=1}^{Np} \Delta ACE(k+m|k)^2 + r_w \sum_{m=0}^{Nc-1} \Delta P_I(k+m)^2 \quad (7)$$

This minimization implies that based on the prediction of future states of the first term, $k+1, k+2, \dots, k+Np$ at present time k , the series of the future and present inputs of the second term are optimized. There are several methods to obtain the solution. In this article, Laguerre functions are applied to represent the future inputs as below.

$$\begin{aligned} \Delta P_I(k+m) &= L(m)^T \cdot \eta = [l_1(m) \ \dots \ l_N(m)][c_1 \ \dots \ c_N]^T \\ &= [l_1(m) \ \dots \ l_N(m)][c_1 \ \dots \ c_N]^T \end{aligned} \quad (8)$$

here, $L(0) \ \dots \ L(m)$ are the set of discrete Laguerre functions in the vector form. $l_i(m)$ is the discrete Laguerre functions ($i = 1, \dots, N$) with the sampling instant k , and c_i is the coefficient ($i = 1, \dots, N$) to be determined to minimize the cost function. After the minimization, the optimal feedback control at present time k can be determined as follows:

$$\Delta P_I(k) = -K_{mpc} x(k) \quad (9)$$

Table III. Frequency deviation analysis

Area	Conventional MPC cases			Proposed IMC cases		
	I	II	III	I	II	III
Over shoot						
1	—	0.1541	0.2701	—	0.1402	0.2698
2	—	0.1380	0.1277	—	0.0884	0.1096
3	—	0.1358	0.1266	—	0.1172	0.1253
Standard deviation						
1	0.0044	0.0247	0.0146	0.0034	0.0256	0.0163
2	0.0040	0.0180	0.0105	0.0024	0.0139	0.0095
3	0.0035	0.0221	0.0130	0.0013	0.0204	0.0132

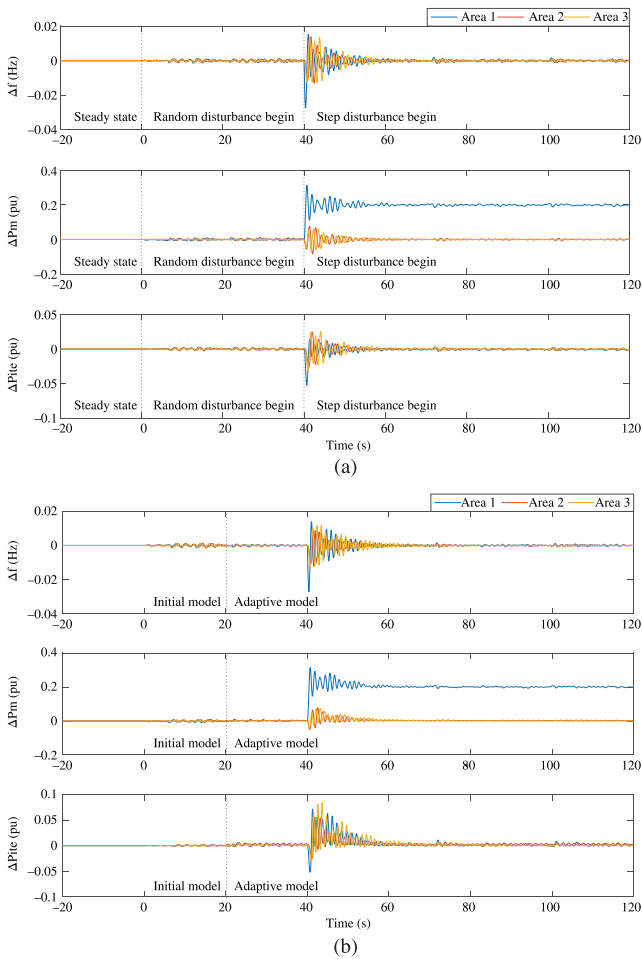


Fig. 5. Controller responses in case II. (a) Conventional MPC controller, (b) proposed adaptive controller

where

$$K_{mpc} = L(0)^T \Omega^{-1} \Psi \quad (10)$$

$$\Omega = \sum_{m=1}^{N_p} \phi(m) Q \phi(m)^T + R_L, \quad \Psi = \sum_{m=1}^{N_p} \varphi(m) Q A^m, \quad \varphi(m) = \sum_{i=0}^m A^{m-i-1} B L(i)^T, Q = C^T C, R_L = r_w \cdot \text{diag}[1, \dots, 1].$$

See Appendix for the treatment of Laguerre functions, $L(0)$ to $L(m)$.

Then, the LFC control signal to the power system can now be updated as follows.

$$P_{LFC}(k) = P_{LFC}(k-1) + \Delta P_I(k) \quad (11)$$

For MPC control design, it is required to select the time scaling factor, a , and the number of the weighting coefficient, N . Although in theory any selection of parameter can be an approximation, an adequate selection may provide better control performance.

2.5. Computational procedure The computational procedure for the proposed control is given as follows.

Step 1: At the control center, using control signal to the plant P_I and measured ACE, adaptive model identification is performed using the least square method to estimate $(\hat{a}$ and $\hat{b})$.

Step 2: Gain K_{mpc} is computed and LFC input is determined, which is divided and added to ELD signals to the individual power plants.

Repeat steps 1–2.

Note that the actual control cycle for LFC is usually equivalent to the ELD control cycle, which is about 1 s to 1 min with a ramp rate limit, which is typically around 3% of plant capacity per minute. This implies that such a simple model of (6) is sufficient. In the next section, the control cycle is assumed 1 s, where past 20 s of measured data are used to determine the LFC signal taking account of 3% ramp rate limit.

3. Simulations

A three-area system cited from Refs [4,13] in Fig. 3 is used as an original system whose parameters are given in Table I. In this system, capacity of each area is 1 GW = 1 pu. The LFC capacity is assumed to be 0.02 pu, while the ramp rate limit is set to 5%/s assuming that all the generation comes from thermal power plants.

Inside the three area power system model, the detailed model given in the Appendix is used for each area.

The proposed controller will be computed as follows. The system identification is carried out using the available input/output data of the plant. An initial value of K_{mpc} of the controller is computed based on the initial setting of the internal model, which will be updated using the updated internal model from $t = 20$.

The proposed control scheme is verified, compared with an existing controller that is also a nonlinear MPC controller with the Laguerre function internal model. The scaling factor $a = 0.3$ and network lengths $N = 4$ are used for the existing controllers, which have no adaptive nature different from the proposed controller. The gain of the existing controller was preliminary computed off-line, which is applied for the whole simulation period.

Simulations are performed in three cases with different disturbances as shown in Table II, where random and step disturbances are imposed on the load in area 1. The disturbances are caused by the load changes. The ‘random’ implies white noise with maximum 0.1 pu changes in the load, which is applied from $t = 0$. The ‘step disturbance’ is 0.2 pu change in load, which is applied at $t = 40$ for cases II and III in addition to the white noise.

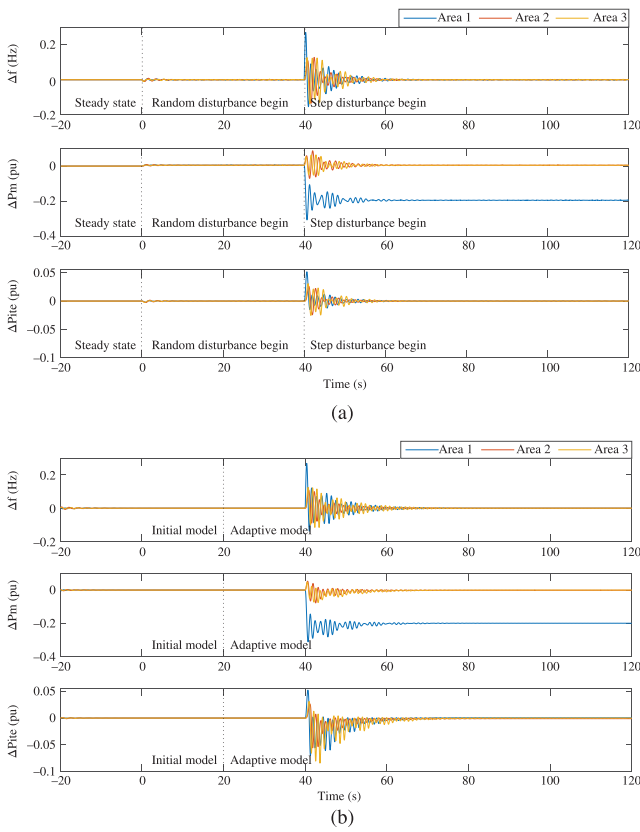


Fig. 6. Controller responses in case III. (a) Conventional MPC controller, (b) proposed adaptive controller

3.1. Case I Simulation results are shown in Fig. 4(a) for the conventional MPC method and in Fig. 4(b) for the proposed method. The results are summarized in Fig. 8 and Table III. It is observed that the proposed controller shows slightly better performance compared to the existing MPC controller.

3.2. Case II The step disturbance is applied at $t = 40$ in addition to the random disturbance. The results are shown in Fig. 5(a) for the existing MPC and Fig. 5(b) for the proposed controller. They are summarized in Fig. 8 and Table III.

A better performance is observed. It is noted that although the proposed method is based on much simpler internal model compared with the existing controller, the control performance is even better. This is an advantageous feature of the proposed method.

3.3. Case III An outage of generator producing 0.2 pu real power is applied at $t = 40$. Similar to two previous cases, a slightly better performance in the proposed LFC is observed compared to the existing controller as shown in Fig. 6(b), Fig. 8 and Table III.

3.4. Performance evaluation This section quantitatively summarizes the performance of the proposed methods based on the simulation results.

Figure 7(a) and (b) show how the internal model parameters are identified. It is observed from Fig. 7(a) that initial gain K is updated as soon as the model identification process is completed at $t = 20$, which is a consistent value based on the LSM. Figure 7(b) shows that the initial time constant is updated very slightly around 1.0. Those values are continuously updated around the converged values.

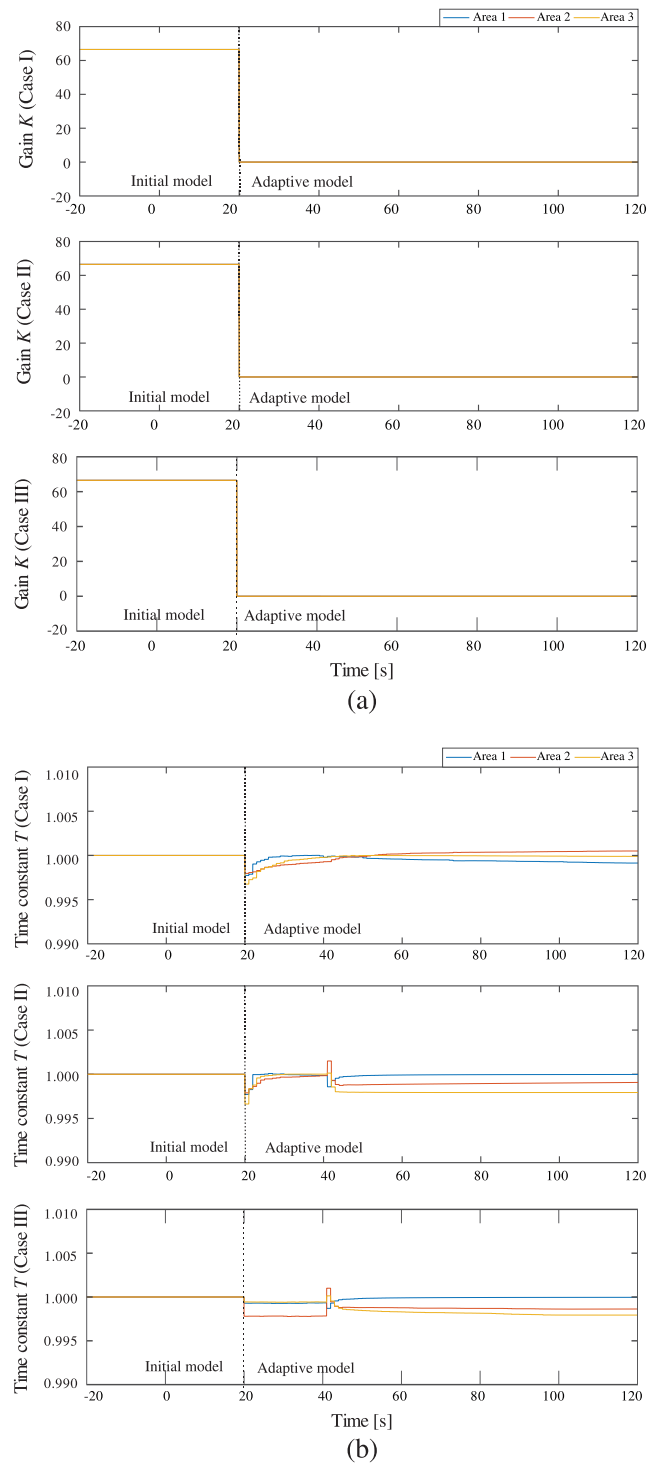


Fig. 7. Adaptive model identification process. (a) Gain K , (b) time constant T

Table III lists measured values of the overshoot for the step disturbance, and the standard deviations of frequency oscillations for all cases, which are given in Fig. 8 in a bar graph. It is seen from the table and figure that the performance of the proposed method is equivalent or better than the conventional MPC controller. This implies that the proposed controller can successfully identify the target model and handle the power system disturbances. In the same way, the controller keeps the system conditions successfully at the set points.

3.5. Computational burden Simulations are carried out on PC with Intel Core i7 2.9 GHz CPU and 16GB RAM

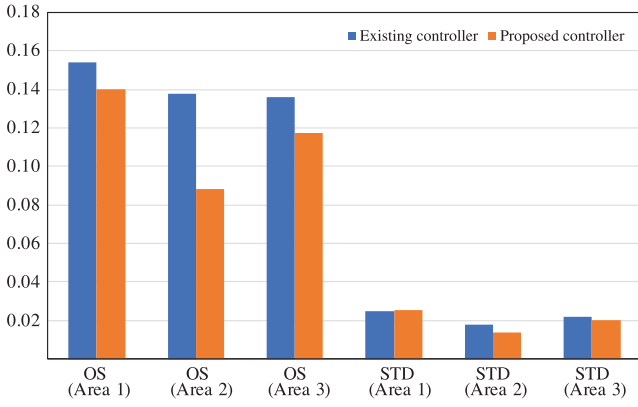


Fig. 8. Overshoot (OS) and standard deviation (STD) of area 1–3 in case II

Table IV. Simulation time (s)

	Conventional MPC (Off-line)	Proposed IMC (On-line)
System Identification	—	0.0084
Optimal gain computation	0.4509	0.0051 (updated)

using MATLAB 2016a under Windows 10. CPU times for the computation of controllers are listed in Table IV. The conventional method assumes that the system dynamic performance was fixed, and, therefore, no update process would be required. However, this is not the case for the present power system situation, in which the dynamic performance is continuously varying. In this case, the conventional method also requires model updates. From this point of view, the proposed method is considerably advantageous.

4. Conclusions

This article proposes a new adaptive LFC method, where the internal model of MPC is adaptively updated on-line using the Least Square Method. Based on the authors’ knowledge, this controller is recognized as a new type of controller for LFC. The performance of the controller is fair in handling load disturbances by using a relatively slow control cycle of actual systems.

An important feature is that the system identification is carried out at the control center using the real LFC signal and the real system response, where the effective constraints are unknown at the control center. However, the unknown constraints are embedded in the identified system, which is used in the adaptive control.

Simulation results show that the internal model parameters were updated on-line to guarantee a high performance of the proposed controller. Based on the investigation of the system performance and the computation time, the proposed control scheme has shown its superiority compared to the existing MPC controller.

We have used a fixed value of 3% of ramp rate limit for generators. However, in actual systems, the constraints including ramp rates for LFC vary from minute to minute depending on various factors such as the pattern of load change, the number of generators participating in LFC, their generation dispatch patterns, and so on, whose exact modeling is difficult. The proposed approach is a challenge for this problem using the adaptive control strategy with a real-time system identification. However, we should mention that a further study is required to deal with the constraints more accurately.

Acknowledgments

The first author would like to thank the University of Papua as well as Indonesian Ministry of Research, Technology, and Higher Education Directorate via General of Higher Education that support his study and research in Hiroshima University.

Nomenclature

Abbreviations

ACE	area control error
AGC	automatic generation control
ELD	economic load dispatch
IMC	internal model control
LFC	load frequency control
LMI	linear matrix inequalities
LSM	least square method
MPC	model predictive control
PI(D)	proportional–integral (derivative) controller

Variable numbers

A, B, C, D, F	state space matrices
α_l	Laguerre Toeplitz matrix
a	Discrete time scaling factor
f_i	Grid frequency of area i
J	Cost function
K	Adaptive model gain
K_{mpc}	MPC gain vector
L	Laguerre function
m	Sampling instant
n	Number of area
N	Number of sample
N_p	Prediction horizon
$P(k)$	Measured total demand at k .
$\hat{P}(k k-1)$	Total demand at k predicted at $k-1$
P_{LFC}	LFC signal to plant
Q	Weighting matrix
q	Output variable
$R \in \mathfrak{R}^{n_i \times n_i}$	Diagonal matrix contains tuning parameters
T	Adaptive model time constant
u	Control output
x	State matrix
y	System output
α	Toeplitz matrix element = $a - 1$
$\eta \in \mathfrak{R}^{n_s \times N}$	Optimal solution vector
ΓN	Discrete Laguerre network
$P_{m,i}$	Mechanical power
v_i	The area interface

A. Appendix

A.1 Power System Model

State space model of a power system including governor, turbine, rotating mass, demand and tie-line power, bias, and frequency droop characteristics is represented by the following equations.

$$\dot{x}_i(t) = A_i x_i(t) + B_i u_i(t) + F_i w_i(t) \quad (A1)$$

$$y_i(t) = C_i x_i(t) + D_i u_i(t) \quad (A2)$$

$$|\dot{u}_i(t)| \leq r_{\max i=1 \dots n} \quad (A3)$$

where

$$x_i(t) = \text{state variables} = [\Delta P_{g,i} \ \Delta P_{m,i} \ \Delta f_i \ \Delta P_{tie,i}]^T$$

$u_i(t)$ = control variable = $\Delta P_{LFC,i}$.

$w_i(t) = [\Delta P_{L,i} \ \Delta v_{,i}]^T$.

$y_i(t)$ = output variable = ACE_i

Tie-line power change P_{tie} and the area control error (ACE) are as follows.

$$\Delta P_{tie,i} = \frac{2\pi}{s} \left[\sum_{\substack{j=1 \\ j \neq i}}^n T_{ij} \Delta f_i - \sum_{\substack{j=1 \\ j \neq i}}^n T_{ij} \Delta f_j \right] \quad (A4)$$

$$ACE_i = \Delta P_{tie,i} + \beta_i \Delta f_i \quad (A5)$$

$$\Delta v_i = \sum_{\substack{j=1 \\ j \neq i}}^N T_{ij} \Delta f_j \quad (A6)$$

The matrices in (A1) are given as follows.

$$A_i = \begin{bmatrix} -\frac{1}{T_{g,i}} & 0 & -\frac{1}{R_i T_{g,i}} & 0 \\ \frac{1}{T_{t,i}} & -\frac{1}{T_{t,i}} & 0 & 0 \\ 0 & \frac{1}{2H_i} & -\frac{d_i}{2H_i} & -\frac{1}{2H_i} \\ 0 & 0 & 2\pi \sum_{\substack{j=1 \\ j \neq i}}^n T_{ij} & 0 \end{bmatrix} \quad (A7)$$

$$B_i = \left[\frac{1}{T_{g,i}} \ 0 \ 0 \ 0 \right]^T \quad (A8)$$

$$C_i = [0 \ 0 \ \beta_i \ 1] \quad (A9)$$

$$D_i = [0] \quad (A10)$$

$$F_i = \begin{bmatrix} 0 & 0 \\ 0 & 0 \\ -\frac{1}{2H_i} & 0 \\ 0 & -2\pi \end{bmatrix} \quad (A11)$$

where r_{\max} is the maximum ramp rate constraint, $P_{g,i}$ is the governor output, $P_{m,i}$ the mechanical power, $P_{L,i}$ is the load/disturbance, v_i is the area interface, $P_{LFC,i}$ is the control action, y_i is the system output, H_i is the equivalent inertia constant, d_i is the equivalent damping coefficient, R_i is the speed droop characteristics, and β_i is the frequency bias factor of area i . T_{ij} is the tie-line synchronizing coefficient with area j , $T_{g,i}$, and $T_{t,i}$ are the governor and turbine time constants of area i .La.

A.2 Laguerre Functions

Laguerre functions satisfying the following difference equation is used in this article.

$$L(k+1) = A_l L(k) \quad (A12)$$

The initial condition is given by

$$L(0)^T = \sqrt{\beta} [1 \ -a \ a^2 \ -a^3 \ \dots \ (-1)^{N-1} a^{N-1}]$$

$$A_l = \begin{bmatrix} a & 0 & 0 & 0 & \vdots \\ \beta & a & 0 & 0 & \vdots \\ -a\beta & \beta & a & 0 & \vdots \\ a^2\beta & -a\beta & \beta & a & \vdots \\ \dots & \dots & \dots & \dots & a \end{bmatrix}$$

a is the discrete pole of the Laguerre network and $\beta = (1 - a^2)$. $N = 5$ is used in this article.

References

- (1) Elgerd OI, Fosha C. Optimum megawatt-frequency control of electric energy systems. *IEEE Transactions on Power Apparatus and Systems* 1970; **PAS-89**(4):556–557.
- (2) Kumar IP, Kothari DP. Recent philosophies of automatic generation control strategies in power systems. *IEEE Transactions on Power Systems* February 2005; **20**(1):346–357.
- (3) Cai L, He Z, Hu H. A new load frequency control method of multi-area power system via the viewpoints of port-Hamiltonian system and Cascade system. *IEEE Transactions on Power Systems* May 2017; **32**(3):1689–1700.
- (4) Bevrani H. *Robust Power System Frequency Control*. Springer: New York; 2009.
- (5) Beaufays F, Abdel-Magid Y, Widrow B. Application of neural networks to load-frequency control in power systems. *Neural Networks* 1994; **7**(1):183–194.
- (6) Chaturvedi DK, Satsangi PS, Kalra PK. Load frequency control: A generalized neural network approach. *International Journal of Electrical Power & Energy Systems* 1999; **21**:405–415.
- (7) Bevrani H, Hiyama T, Mitani Y, Tsuji K, Teshnehlab M. Load frequency regulation under abilateral LFC scheme using flexible neural networks. *Engineering Intelligent Systems* 2006; **14**(2):109–117.
- (8) Juang CF, Lu CF. Load-frequency control by hybrid evolutionary fuzzy PI controller. *IEE Proceedings—Generation, Transmission and Distribution* 2006; **153**(2):196.
- (9) Chang CS, Fu W. Area load frequency control using fuzzy gain scheduling of PI controllers. *Electric Power Systems Research* 1997; **42**:145–152.
- (10) Yesil E, Guzelkaya M, Eksin I. Self tuning fuzzy PID type load frequency controller. *Energy Conversion and Management* 2004; **45**:377–390.
- (11) Mohamed TH, Morel J, Bevrani H, Hiyama T. Model predictive based load frequency control design concerning wind turbines. *Electrical Power and Energy Systems* July 2012; **43**:859–867.
- (12) Ersdal AM, Imsland KU. Model predictive load-frequency control. *IEEE Transactions on Power Systems* 2016; **31**(1):777–785.
- (13) Rehiara AB, Chongkai He, Sasaki Y, Yorino N, Zoka Y. An adaptive IMC-MPC controller for improving LFC performance. *2017 Innovative Smart Grid Technologies (Asia)*, Auckland, December 2017.
- (14) Rehiara AB, Sasaki Y, Yorino N, Zoka Y. A performance evaluation of load frequency controller using discrete model predictive controller. *2016 International Seminar on Intelligent Technology and Its Applications (ISITIA)*, Lombok, 2016; 655–660.
- (15) Watanabe K, Muramatsu E. Adaptive internal model control of SISO systems, vol. 3. *SICE 2003 Annual Conference (IEEE Cat. No. 03TH8734)*, Fukui, Japan, 2003; 3084–3089.
- (16) Qiu Z, Santillo M, Sun J, Jankovic M. Enhanced composite adaptive IMC for boost pressure control of a turbocharged gasoline engine. *2016 American Control Conference (ACC)*, Boston, MA, **2016**; 3286–3291.
- (17) Shigemasa T, Yukitomo M, Kuwata R. A model-driven PID control system and its case studies. *Proceedings of the International Conference on Control Applications*, vol. **1**, 2002; 571–576
- (18) Seki H. Adaptive IMC-PI controllers for process applications. *2016 12th IEEE International Conference on Control and Automation (ICCA)*, Kathmandu, 2016; 455–460.
- (19) Gu J-J, Shen L, Zhang L-Y. Application of internal model and self-adaptive PSD controller in the main steam temperature system. *2005 International Conference on Machine Learning and Cybernetics*, Guangzhou, China, 2005; 570–573.
- (20) Baba Y, Shigemasa T, Yukitomo M, Kojima F, Takahashi M, Sasamura E. Model-driven PID control system in single-loop controller. *SICE 2003 Annual Conference (IEEE Cat. No.03TH8734)*, Vol. 1, Fukui, Japan, 2003; 187–190.
- (21) Shamsuzzoha M, Lee M. IMC based control system design of PID cascaded filter. *2006 SICE-ICASE International Joint Conference*, Busan, 2006; 2485–2490.

- (22) Ho WK, Lee TH, Han HP, Hong Y. Self-tuning IMC-PID control with interval gain and phase margins assignment. *IEEE Transactions on Control Systems Technology* 2001; 9(3):535–541.
- (23) Jin Q, Feng C, Liu MX. Fuzzy IMC for unstable systems with time delay. *2008 IEEE Pacific-Asia Workshop on Computational Intelligence and Industrial Application*, Wuhan, 2008; 772–778.
- (24) Xie WF, Rad AB. Fuzzy adaptive internal model control. *1998 IEEE International Conference on Fuzzy Systems Proceedings, IEEE World Congress on Computational Intelligence (Cat. No. 98CH36228)*, vol. 1, Anchorage, AK, 1998; 516–521.
- (25) Yan L, Rad AB, Wong YK, Chan HS. Model based control using artificial neural networks. *Proceedings of the 1996 IEEE International Symposium on Intelligent Control*, Dearborn, MI, 1996; 283–288.
- (26) Miliadis-Argeitis A, Khammash M. Adaptive model predictive control of an optogenetic system. *54th IEEE Conference on Decision and Control (CDC)*, Osaka, 2015; 1265–1270.
- (27) Psychogios DC, Ungar LH. Nonlinear internal model control and model predictive control using neural networks. *Proceedings. 5th IEEE International Symposium on Intelligent Control*, Philadelphia, PA, 1990; 1082–1087.
- (28) Recommended practice for simulation models for automatic generation control, IEEJ Technical Report No. 1386, 2016.
- (29) Yorino N, Sasaki H, Masuda Y, Tamura Y, Kitagawa M, Oshimo A. An investigation of voltage instability problems. *IEEE Transactions on Power Systems* 1992; 7(2):600–611.

Adelhard Beni Rehiara (Non-member) received his Bachelor degree in electrical engineering in 1999 from the University of Widyagama, Malang, Indonesia. In 2008, he gained Master degree in control systems engineering from HAN University, Arnhem, Netherlands. Currently, he is with the University of Papua and is pursuing a PhD degree in load frequency control of power system with the Graduate School of Engineering, Hiroshima University, Japan. His main research interests include power system optimization, modeling, and control systems.



Naoto Yorino (Fellow) received his B.S., M.S., and Ph.D. degrees in Electrical Engineering from Waseda University, Japan, in 1981, 1983, and 1987, respectively. He is a Professor, Vice Dean, Faculty of Engineering, Hiroshima University, Japan. He was with Fuji Electric Co. Ltd., Japan from 1983 to 1984. He was a Visiting Professor at McGill University, Montreal, QC, Canada, from 1991 to 1992, Vice President of PE&S, the IEE of Japan from 2009 to 2011. Dr. Yorino is a member of IEEE, CIGRE, and iREP.



Yutaka Sasaki (Member) received his B.S., M.S., and Ph.D. degrees in Electrical Engineering from Hokkaido University, Japan in 2004, 2006, and 2008, respectively. He is an Assistant Professor at Hiroshima University. He was a Visiting Scholar at Washington State University, Pullman, WA, USA from 2012 to 2013. His research interests include optimal planning and operation of power system including renewable energy resources.



Yoshifumi Zoka (Senior Member) received his B.S. degree in Electrical Engineering, M.S. and Ph.D. degrees in Systems Engineering from Hiroshima University, Japan. He is currently an Associate Professor in Graduate School of Engineering, Hiroshima University. He was a Research Associate at the University of Washington, Seattle, WA, USA from 2002 to 2003. His research interest lies in power system planning, stability, and control problems.

